

CITY OF YUMA

**PARKS AND RECREATION
FACILITIES INVENTORY**

OCTOBER 27, 2016

**Parks and Recreation Facilities Inventory
Summary
10/27/16**

| | |
|----------------------|---------|
| Park Facilities | 66 |
| Acreage (acres) | 1,085.5 |
| Event Space (sq.ft.) | 115,322 |
| Ramadas | 42 |
| Restrooms | 48 |
| Water Fountains | 34 |
| Field Lights | 121 |
| Lights | 947 |
| Shade Covers | 19 |
| Crow's Nest | 7 |

| | |
|-------------------|----|
| Water Features | 3 |
| Pools | 4 |
| Skate Facilities | 1 |
| Baseball Fields | 6 |
| Soccer Fields | 23 |
| Softball Fields | 15 |
| Basketball Courts | 8 |
| Playgrounds | 29 |
| | |
| Pumping Plants | 9 |

| | |
|---------------------|----|
| Tennis Courts | 10 |
| Volleyball Courts | 8 |
| Gymnasiums | 2 |
| Exercise Facilities | 4 |
| Bocce Courts | 2 |
| Handball Courts | 2 |
| Horseshoe Pits | 11 |
| Golf Courses | 2 |
| | |
| Storage Sites | 29 |

Bark Park

The Bark Park is a dog park that serves a dual purpose as a retention basin. The site also provides a buffer area between the commercial and residential developments along Palo Verde Street.



Location

Area Maintained by:

Type

Acreege Event Space (sf) Shared Use

Restrooms Water Fountains Play grounds Water Feature

Ramadas Field Lights Lights Parking lot Walking Path (lf)

Pumping Plant Shade covers Storage Fencing Trees



Recreation Facilities

- | | |
|--|---|
| Pool <input type="text" value="0"/> | Skate Facility <input type="text" value="0"/> |
| Baseball Fields <input type="text" value="0"/> | Soccer Fields <input type="text" value="0"/> |
| Softball Fields <input type="text" value="0"/> | Crows Nest <input type="text" value="0"/> |
| Basketball Court <input type="text" value="0"/> | Tennis Courts <input type="text" value="0"/> |
| Volleyball Court <input type="text" value="0"/> | Gymnasium <input type="text" value="0"/> |
| Exercise Facility <input type="text" value="0"/> | Bocce Courts <input type="text" value="0"/> |
| Handball Court <input type="text" value="0"/> | Horseshoe Pit <input type="text" value="0"/> |

Improvements Needed

Fence Upgrades/ Concrete Sidewalk Repairs/ Upgrade Agility Amenities/ Shade Screen Replacement/Irrigation Controller Upgrades

Barkley Ranch Park

This facility was built in conjunction with the Barkley Ranch subdivision. It is a joint use neighborhood park for the area residents and a stormwater retention basin.



Location

Area Maintained by:

Type

Acreege Event Space (sf) Shared Use

Restrooms Water Fountains Play grounds Water Feature

Ramadas Field Lights Lights Parking lot Walking Path (lf)

Pumping Plant Shade covers Storage Fencing Trees



Recreation Facilities

- | | |
|--|---|
| Pool <input type="text" value="0"/> | Skate Facility <input type="text" value="0"/> |
| Baseball Fields <input type="text" value="0"/> | Soccer Fields <input type="text" value="0"/> |
| Softball Fields <input type="text" value="0"/> | Crows Nest <input type="text" value="0"/> |
| Basketball Court <input type="text" value="0"/> | Tennis Courts <input type="text" value="0"/> |
| Volleyball Court <input type="text" value="0"/> | Gymnasium <input type="text" value="0"/> |
| Exercise Facility <input type="text" value="0"/> | Bocce Courts <input type="text" value="0"/> |
| Handball Court <input type="text" value="0"/> | Horseshoe Pit <input type="text" value="0"/> |

Improvements Needed

Concrete Sidewalk Repairs/ DG improvements/ Irrigation Controller Upgrades/ Shade Cover for Playground

Caballero Park

Caballero Park is a 27 acre sport center with eight lit tennis courts, 1 pickle-ball court, picnic areas, a playground, open space, ramadas, restroom facilities and off-street parking. The park surrounds the Ray Kroc Complex with open space and flexible field play. The flexible field play area can contain up to five soccer fields. This facility contains Ramadas #10-northwest side of park and #11-southeast side of park.



Location

Area Maintained by:

Type

Acreege Event Space (sf) Shared Use

Restrooms Water Fountains Play grounds Water Feature

Ramadas Field Lights Lights Parking lot Walking Path (If)

Pumping Plant Shade covers Storage Fencing Trees



Recreation Facilities

| | | | |
|-------------------|--------------------------------|----------------|--------------------------------|
| Pool | <input type="text" value="0"/> | Skate Facility | <input type="text" value="0"/> |
| Baseball Fields | <input type="text" value="0"/> | Soccer Fields | <input type="text" value="5"/> |
| Softball Fields | <input type="text" value="0"/> | Crows Nest | <input type="text" value="0"/> |
| Basketball Court | <input type="text" value="0"/> | Tennis Courts | <input type="text" value="8"/> |
| Volleyball Court | <input type="text" value="0"/> | Gymnasium | <input type="text" value="0"/> |
| Exercise Facility | <input type="text" value="0"/> | Bocce Courts | <input type="text" value="0"/> |
| Handball Court | <input type="text" value="0"/> | Horseshoe Pit | <input type="text" value="0"/> |

Improvements Needed

Need Playground Shade Cover/ 3 Soccer Goal Sets/Parking Lot Replacement/ Purchase 10 Picnic Tables/Replace Ramada 10/ Irrigation Controller Upgrades. The 9th tennis court is the Exhibition Court which is out of service due to poor conditions.

Carver Park

This 17-acre park and athletic facility features: a 25 yard heated pool, water spray park, lighted outdoor handball court, basketball and tennis courts with one dual use tennis/pickle-ball court, the John Morris Cottage - a small recreation center, four ramadas, outdoor grills, walking/jogging paths, two playgrounds, two bocce courts, two lighted softball fields (Sanguinetti Athletic - 5 acres), open space areas, and a 400 meter running track (Carver Track - 5 acres). The facility includes one mini-soccer field. This facility contains Ramadas #3-near pool, #4-near John Morris Cottage, #24-north of John Morris Cottage and #25-south end of park. Located directly to the west is the Martin Luther King Jr. Neighborhood Center at 300 S. 13th Avenue.



Location

Area Maintained by:

Type

Acreege Event Space (sf) Shared Use

Restrooms Water Fountains Play grounds Water Feature

Ramadas Field Lights Lights Parking lot Walking Path (If)

Pumping Plant Shade covers Storage Fencing Trees



Recreation Facilities

| | |
|--|---|
| Pool <input type="text" value="1"/> | Skate Facility <input type="text" value="0"/> |
| Baseball Fields <input type="text" value="0"/> | Soccer Fields <input type="text" value="0"/> |
| Softball Fields <input type="text" value="0"/> | Crows Nest <input type="text" value="0"/> |
| Basketball Court <input type="text" value="2"/> | Tennis Courts <input type="text" value="2"/> |
| Volleyball Court <input type="text" value="0"/> | Gymnasium <input type="text" value="0"/> |
| Exercise Facility <input type="text" value="0"/> | Bocce Courts <input type="text" value="2"/> |
| Handball Court <input type="text" value="2"/> | Horseshoe Pit <input type="text" value="0"/> |

Improvements Needed

Playground shade cover. New restrooms. Install covers for water feature.

Carver Track

Carver Track is a joint use facility with the High School District. The facility contains a 1/4 mile running track and sand pits for track and field sports as well as a soccer field. It is located within Carver Park.



Location

Area Maintained by:

Type

Acreege Event Space (sf)

Shared Use

Restrooms Water Fountains Play grounds Water Feature

Ramadas Field Lights Lights Parking lot Walking Path (If)

Pumping Plant Shade covers Storage Fencing Trees



Recreation Facilities

- Pool
- Skate Facility
- Baseball Fields
- Soccer Fields
- Softball Fields
- Crows Nest
- Basketball Court
- Tennis Courts
- Volleyball Court
- Gymnasium
- Exercise Facility
- Bocce Courts
- Handball Court
- Horseshoe Pit

Improvements Needed

Replace fencing.

Centennial Athletic

This site is a shared use facility with Centennial Middle School and contains 2 soccer fields and 2 softball fields.



Location

Area Maintained by:

Type

Acreege Event Space (sf)

Shared Use

Restrooms Water Fountains Play grounds Water Feature

Ramadas Field Lights Lights Parking lot Walking Path (If)

Pumping Plant Shade covers Storage Fencing Trees



Recreation Facilities

| | | | |
|-------------------|--------------------------------|----------------|--------------------------------|
| Pool | <input type="text" value="0"/> | Skate Facility | <input type="text" value="0"/> |
| Baseball Fields | <input type="text" value="0"/> | Soccer Fields | <input type="text" value="2"/> |
| Softball Fields | <input type="text" value="2"/> | Crows Nest | <input type="text" value="0"/> |
| Basketball Court | <input type="text" value="0"/> | Tennis Courts | <input type="text" value="0"/> |
| Volleyball Court | <input type="text" value="0"/> | Gymnasium | <input type="text" value="0"/> |
| Exercise Facility | <input type="text" value="0"/> | Bocce Courts | <input type="text" value="0"/> |
| Handball Court | <input type="text" value="0"/> | Horseshoe Pit | <input type="text" value="0"/> |

Improvements Needed

Change out all fence and screening

Cibola Athletic

This 5-acre joint use facility is shared with Cibola High School. The site contains 2 softball fields lit for night play and a crows nest.



Location

Area Maintained by:

Type

Acreege Event Space (sf)

Shared Use

Restrooms Water Fountains Play grounds Water Feature

Ramadas Field Lights Lights Parking lot Walking Path (If)

Pumping Plant Shade covers Storage Fencing Trees



Recreation Facilities

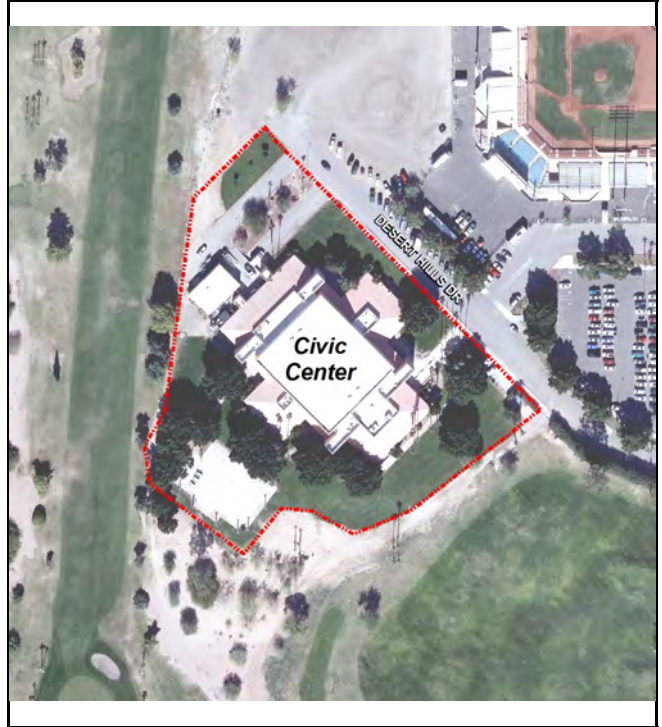
| | | | |
|-------------------|--------------------------------|----------------|--------------------------------|
| Pool | <input type="text" value="0"/> | Skate Facility | <input type="text" value="0"/> |
| Baseball Fields | <input type="text" value="0"/> | Soccer Fields | <input type="text" value="0"/> |
| Softball Fields | <input type="text" value="2"/> | Crows Nest | <input type="text" value="1"/> |
| Basketball Court | <input type="text" value="0"/> | Tennis Courts | <input type="text" value="0"/> |
| Volleyball Court | <input type="text" value="0"/> | Gymnasium | <input type="text" value="0"/> |
| Exercise Facility | <input type="text" value="0"/> | Bocce Courts | <input type="text" value="0"/> |
| Handball Court | <input type="text" value="0"/> | Horseshoe Pit | <input type="text" value="0"/> |

Improvements Needed

Change out all fence and screening, new roof and floor for crows nest, add new stabilizer.

Civic Center

The Yuma Civic Center is a City facility, hosting cultural and civic events, conventions and trade shows, and community recreation (seasonally). The Yuma Civic Center is a major attraction of the James P. Deyo Regional Complex. The Center is situated on approximately 4 acres with a panoramic view from the Sunset Terrace overlooking Mexico and green valley farms. The large main assembly hall can accommodate a variety of exhibitions, banquets, concerts, dances, entertainment shows, etc. The Yuma Civic Center seats up to 2,028 people in the main hall and includes a 12 acre parking lot.



Location

Area Maintained by:

Type

Acreege Event Space (sf) Shared Use

Restrooms Water Fountains Play grounds Water Feature

Ramadas Field Lights Lights Parking lot Walking Path (If)

Pumping Plant Shade covers Storage Fencing Trees



Recreation Facilities

- Pool
- Skate Facility
- Baseball Fields
- Soccer Fields
- Softball Fields
- Crows Nest
- Basketball Court
- Tennis Courts
- Volleyball Court
- Gymnasium
- Exercise Facility
- Bocce Courts
- Handball Court
- Horseshoe Pit

Improvements Needed

Replace Front Entrance Fountain/ Irrigation Controller Upgrades

Clymer Park

Clymer Park is a small property in the 500 block of Orange Avenue and features a small tot playground and open green space. The Clymer Center, a pre-fabricated building, is located within the park and serves as a community recreation center that houses classroom activities. Clymer Center has an on-site restroom available to the center patrons. This facility is located within the Century Heights Historic District.



Location

Area Maintained by:

Type

Acreege Event Space (sf) Shared Use

Restrooms Water Fountains Play grounds Water Feature

Ramadas Field Lights Lights Parking lot Walking Path (If)

Pumping Plant Shade covers Storage Fencing Trees



Recreation Facilities

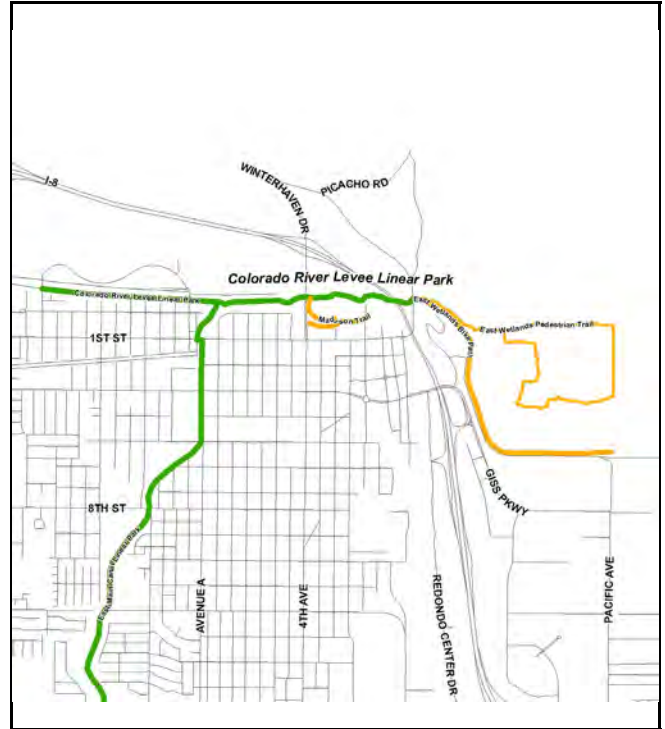
- Pool
- Skate Facility
- Baseball Fields
- Soccer Fields
- Softball Fields
- Crows Nest
- Basketball Court
- Tennis Courts
- Volleyball Court
- Gymnasium
- Exercise Facility
- Bocce Courts
- Handball Court
- Horseshoe Pit

Improvements Needed

Playground is dated and in need of upgrade in near future.

Colorado River Levee Linear Park

This multi-use pathway extends west to east from Joe Henry Park to the Yuma Crossing Park. The approximately 2-mile paved pathway includes landscaping and rest areas with benches and water fountains. Running along the alignment is the Levee Horse Trail.



Location

Area Maintained by:

Type

Acreage Event Space (sf) Shared Use
 Restrooms Water Fountains Play grounds Water Feature
 Ramadas Field Lights Lights Parking lot Walking Path (If)
 Pumping Plant Shade covers Storage Fencing Trees



Recreation Facilities

| | |
|--|---|
| Pool <input type="text" value="0"/> | Skate Facility <input type="text" value="0"/> |
| Baseball Fields <input type="text" value="0"/> | Soccer Fields <input type="text" value="0"/> |
| Softball Fields <input type="text" value="0"/> | Crows Nest <input type="text" value="0"/> |
| Basketball Court <input type="text" value="0"/> | Tennis Courts <input type="text" value="0"/> |
| Volleyball Court <input type="text" value="0"/> | Gymnasium <input type="text" value="0"/> |
| Exercise Facility <input type="text" value="0"/> | Bocce Courts <input type="text" value="0"/> |
| Handball Court <input type="text" value="0"/> | Horseshoe Pit <input type="text" value="0"/> |

Improvements Needed

Desert Hills Golf Course

Desert Hills Golf Course is the premier golfing facility in southwestern Arizona and southeastern California. The course features 6,800 yards of challenging topography and scenic views with an interesting mix of vegetation. Desert Hills is a par 72 championship course that serves the region. The course is maintained at a top-notch level and has been the site of several professional events including the Ben Hogan and Nike Tour Events. Rolling hills, palm trees, and big greens makes this the favorite golf course in the local area. Desert Hills Golf Course has been voted Yuma's Best Golf Course 14 of the last 15 years.



Location

Area Maintained by:

Type

Acres Event Space (sf)

Shared Use

Restrooms Water Fountains Play grounds Water Feature

Ramadas Field Lights Lights Parking lot Walking Path (If)

Pumping Plant Shade covers Storage Fencing Trees



Recreation Facilities

- Pool
- Skate Facility
- Baseball Fields
- Soccer Fields
- Softball Fields
- Crows Nest
- Basketball Court
- Tennis Courts
- Volleyball Court
- Gymnasium
- Exercise Facility
- Bocce Courts
- Handball Court
- Horseshoe Pit

Improvements Needed

Desert Hills Par 3 Golf Course

Desert Hills Par 3 is an 18-hole course built in 1961. It provides a first-class municipal golf experience to Yuma residents and beyond.



Location

Area Maintained by:

Type

Acreage Event Space (sf)

Shared Use

Restrooms Water Fountains Play grounds Water Feature

Ramadas Field Lights Lights Parking lot Walking Path (If)

Pumping Plant Shade covers Storage Fencing Trees



Recreation Facilities

- Pool
- Skate Facility
- Baseball Fields
- Soccer Fields
- Softball Fields
- Crows Nest
- Basketball Court
- Tennis Courts
- Volleyball Court
- Gymnasium
- Exercise Facility
- Bocce Courts
- Handball Court
- Horseshoe Pit

Improvements Needed

Desert Ridge Park

This facility was built in conjunction with the Desert Ridge subdivision. It is a joint use neighborhood park for the area residents and a stormwater retention basin.



Location

Area Maintained by:

Type

Acreege Event Space (sf) Shared Use

Restrooms Water Fountains Play grounds Water Feature

Ramadas Field Lights Lights Parking lot Walking Path (If)

Pumping Plant Shade covers Storage Fencing Trees



Recreation Facilities

- | | |
|--|---|
| Pool <input type="text" value="0"/> | Skate Facility <input type="text" value="0"/> |
| Baseball Fields <input type="text" value="0"/> | Soccer Fields <input type="text" value="0"/> |
| Softball Fields <input type="text" value="0"/> | Crows Nest <input type="text" value="0"/> |
| Basketball Court <input type="text" value="0"/> | Tennis Courts <input type="text" value="0"/> |
| Volleyball Court <input type="text" value="0"/> | Gymnasium <input type="text" value="0"/> |
| Exercise Facility <input type="text" value="0"/> | Bocce Courts <input type="text" value="0"/> |
| Handball Court <input type="text" value="0"/> | Horseshoe Pit <input type="text" value="0"/> |

Improvements Needed

Backflow cage and paint swings

East Main Canal Linear Park

The East Main Canal Linear Park is a five mile long lighted asphalt path with rest areas running along the canal. The path is used for pedestrian and bicycle traffic and runs from Colorado St. on the north side of the City to 40th St. on the south side of the City. The East Main Canal Multi-Use Facility is the main corridor of the City's non-motorized vehicular transportation network. The East Main Canal Path connects to the 8/10 mile 20th Street Path at 20th Street.



Location

Area Maintained by:

Type

Acreege Event Space (sf) Shared Use

Restrooms Water Fountains Play grounds Water Feature

Ramadas Field Lights Lights Parking lot Walking Path (If)

Pumping Plant Shade covers Storage Fencing Trees



Recreation Facilities

- Pool
- Skate Facility
- Baseball Fields
- Soccer Fields
- Softball Fields
- Crows Nest
- Basketball Court
- Tennis Courts
- Volleyball Court
- Gymnasium
- Exercise Facility
- Bocce Courts
- Handball Court
- Horseshoe Pit

Improvements Needed

Elena Orendain Curtis Athletic Complex

The Elena Orendain Curtis Athletic Complex at Yuma Catholic High School consists of two softball fields, three baseball fields, open green space for seasonal sports activities, and two restroom/concession stands. The City utilizes these facilities to conduct recreational programs, such as adult and youth softball and baseball.



Location

Area Maintained by:

Type

Acreege Event Space (sf) Shared Use

Restrooms Water Fountains Play grounds Water Feature

Ramadas Field Lights Lights Parking lot Walking Path (If)

Pumping Plant Shade covers Storage Fencing Trees



Recreation Facilities

| | | | |
|-------------------|--------------------------------|----------------|--------------------------------|
| Pool | <input type="text" value="0"/> | Skate Facility | <input type="text" value="0"/> |
| Baseball Fields | <input type="text" value="3"/> | Soccer Fields | <input type="text" value="1"/> |
| Softball Fields | <input type="text" value="2"/> | Crows Nest | <input type="text" value="1"/> |
| Basketball Court | <input type="text" value="0"/> | Tennis Courts | <input type="text" value="0"/> |
| Volleyball Court | <input type="text" value="0"/> | Gymnasium | <input type="text" value="0"/> |
| Exercise Facility | <input type="text" value="0"/> | Bocce Courts | <input type="text" value="0"/> |
| Handball Court | <input type="text" value="0"/> | Horseshoe Pit | <input type="text" value="0"/> |

Improvements Needed

Softball Field Fence Replacement/ Fields 1-2 Fence Repairs and Replacement/ Softball Field Parking Lot Resurfacing, Irrigation Controller Upgrades/ Baseball and Softball Field Reconditioning

Friendship Park

Friendship Park is a 3-acre park located below Friendship Tower. The park includes, ramadas, walking paths, an exercise facility, and a water spray feature for children. This facility contains Ramadas #22-northwest corner and #11-southeast corner.



Location

Area Maintained by:

Type

Acreege Event Space (sf) Shared Use

Restrooms Water Fountains Play grounds Water Feature

Ramadas Field Lights Lights Parking lot Walking Path (lf)

Pumping Plant Shade covers Storage Fencing Trees



Recreation Facilities

| | | | |
|-------------------|--------------------------------|----------------|--------------------------------|
| Pool | <input type="text" value="0"/> | Skate Facility | <input type="text" value="0"/> |
| Baseball Fields | <input type="text" value="0"/> | Soccer Fields | <input type="text" value="0"/> |
| Softball Fields | <input type="text" value="0"/> | Crows Nest | <input type="text" value="0"/> |
| Basketball Court | <input type="text" value="0"/> | Tennis Courts | <input type="text" value="0"/> |
| Volleyball Court | <input type="text" value="0"/> | Gymnasium | <input type="text" value="0"/> |
| Exercise Facility | <input type="text" value="1"/> | Bocce Courts | <input type="text" value="0"/> |
| Handball Court | <input type="text" value="0"/> | Horseshoe Pit | <input type="text" value="0"/> |

Improvements Needed

Water Feature Pad Replacement/ Water Feature Shade Cover/ Concrete Sidewalk Repairs/ Excercise Equipment Upgrades/ Irrigation Controller Upgrades

Gateway Park

Gateway Park is the downtown riverfront park which runs from the Ocean-to-Ocean Bridge to the Yuma Crossing Park. This facility includes beaches, picnic ramadas, playground, parking, restrooms, lighting and green space. This facility contains Ramadas #37-by the beach, #38-next to the playground and #39-upper deck near parking lot.



Location

Area Maintained by:

Type

Acreege Event Space (sf) Shared Use

Restrooms Water Fountains Play grounds Water Feature

Ramadas Field Lights Lights Parking lot Walking Path (If)

Pumping Plant Shade covers Storage Fencing Trees



Recreation Facilities

- | | |
|--|---|
| Pool <input type="text" value="0"/> | Skate Facility <input type="text" value="0"/> |
| Baseball Fields <input type="text" value="0"/> | Soccer Fields <input type="text" value="0"/> |
| Softball Fields <input type="text" value="0"/> | Crows Nest <input type="text" value="0"/> |
| Basketball Court <input type="text" value="0"/> | Tennis Courts <input type="text" value="0"/> |
| Volleyball Court <input type="text" value="0"/> | Gymnasium <input type="text" value="0"/> |
| Exercise Facility <input type="text" value="0"/> | Bocce Courts <input type="text" value="0"/> |
| Handball Court <input type="text" value="0"/> | Horseshoe Pit <input type="text" value="0"/> |

Improvements Needed

Hacienda 1 Park

This facility is the first of four pocket parks within the Hacienda Estates subdivision. Formerly small gravel retention basins, these 1/8-1/4 acre plots of land have been converted to pocket parks to serve this neighborhood.



Location

Area Maintained by:

Type

Acreeage Event Space (sf) Shared Use

Restrooms Water Fountains Play grounds Water Feature

Ramadas Field Lights Lights Parking lot Walking Path (If)

Pumping Plant Shade covers Storage Fencing Trees



Recreation Facilities

- | | |
|--|---|
| Pool <input type="text" value="0"/> | Skate Facility <input type="text" value="0"/> |
| Baseball Fields <input type="text" value="0"/> | Soccer Fields <input type="text" value="0"/> |
| Softball Fields <input type="text" value="0"/> | Crows Nest <input type="text" value="0"/> |
| Basketball Court <input type="text" value="0"/> | Tennis Courts <input type="text" value="0"/> |
| Volleyball Court <input type="text" value="0"/> | Gymnasium <input type="text" value="0"/> |
| Exercise Facility <input type="text" value="0"/> | Bocce Courts <input type="text" value="0"/> |
| Handball Court <input type="text" value="0"/> | Horseshoe Pit <input type="text" value="0"/> |

Improvements Needed

DG Improvements/ Concrete Bench Replacements/ Irrigation Controller Upgrades

Hacienda 2 Park

This facility is the second of four pocket parks within the Hacienda Estates subdivision. Formerly small gravel retention basins, these 1/8-1/4 acre plots of land have been converted to pocket parks to serve this neighborhood.



Location

Area Maintained by:

Type

Acreeage Event Space (sf) Shared Use

Restrooms Water Fountains Play grounds Water Feature

Ramadas Field Lights Lights Parking lot Walking Path (If)

Pumping Plant Shade covers Storage Fencing Trees



Recreation Facilities

- | | |
|--|---|
| Pool <input type="text" value="0"/> | Skate Facility <input type="text" value="0"/> |
| Baseball Fields <input type="text" value="0"/> | Soccer Fields <input type="text" value="0"/> |
| Softball Fields <input type="text" value="0"/> | Crows Nest <input type="text" value="0"/> |
| Basketball Court <input type="text" value="0"/> | Tennis Courts <input type="text" value="0"/> |
| Volleyball Court <input type="text" value="0"/> | Gymnasium <input type="text" value="0"/> |
| Exercise Facility <input type="text" value="0"/> | Bocce Courts <input type="text" value="0"/> |
| Handball Court <input type="text" value="0"/> | Horseshoe Pit <input type="text" value="0"/> |

Improvements Needed

DG Improvements/ Concrete Bench Replacements/ Irrigation Controller Upgrades

Hacienda 3 Park

This facility is the third of four pocket parks within the Hacienda Estates subdivision. Formerly small gravel retention basins, these 1/8-1/4 acre plots of land have been converted to pocket parks to serve this neighborhood.



Location

Area Maintained by:

Type

Acreege Event Space (sf) Shared Use

Restrooms Water Fountains Play grounds Water Feature

Ramadas Field Lights Lights Parking lot Walking Path (If)

Pumping Plant Shade covers Storage Fencing Trees



Recreation Facilities

- | | |
|--|---|
| Pool <input type="text" value="0"/> | Skate Facility <input type="text" value="0"/> |
| Baseball Fields <input type="text" value="0"/> | Soccer Fields <input type="text" value="0"/> |
| Softball Fields <input type="text" value="0"/> | Crows Nest <input type="text" value="0"/> |
| Basketball Court <input type="text" value="0"/> | Tennis Courts <input type="text" value="0"/> |
| Volleyball Court <input type="text" value="0"/> | Gymnasium <input type="text" value="0"/> |
| Exercise Facility <input type="text" value="0"/> | Bocce Courts <input type="text" value="0"/> |
| Handball Court <input type="text" value="0"/> | Horseshoe Pit <input type="text" value="0"/> |

Improvements Needed

DG Improvements/ Concrete Bench Replacements/ Irrigation Controller Upgrades

Hacienda 4 Park

This facility is the fourth of four pocket parks within the Hacienda Estates subdivision. Formerly small gravel retention basins, these 1/8-1/4 acre plots of land have been converted to pocket parks to serve this neighborhood.



Location

Area Maintained by:

Type

Acreeage Event Space (sf) Shared Use

Restrooms Water Fountains Play grounds Water Feature

Ramadas Field Lights Lights Parking lot Walking Path (If)

Pumping Plant Shade covers Storage Fencing Trees



Recreation Facilities

- | | |
|--|---|
| Pool <input type="text" value="0"/> | Skate Facility <input type="text" value="0"/> |
| Baseball Fields <input type="text" value="0"/> | Soccer Fields <input type="text" value="0"/> |
| Softball Fields <input type="text" value="0"/> | Crows Nest <input type="text" value="0"/> |
| Basketball Court <input type="text" value="0"/> | Tennis Courts <input type="text" value="0"/> |
| Volleyball Court <input type="text" value="0"/> | Gymnasium <input type="text" value="0"/> |
| Exercise Facility <input type="text" value="0"/> | Bocce Courts <input type="text" value="0"/> |
| Handball Court <input type="text" value="0"/> | Horseshoe Pit <input type="text" value="0"/> |

Improvements Needed

DG Improvements/ Concrete Bench Replacements/ Irrigation Controller Upgrades

James P. Deyo Regional Complex

The 260 acre, city-owned regional complex includes Caballero Park (27 acres), the Ray Kroc Baseball Complex (25 acres), the Desert Hills Golf Course (154 acres), the Desert Hills Par 3 Golf Course (34 acres), and Friendship Park (3 acres). The City’s primary community center, the Yuma Civic Center (4.2 acres and a 12 acre parking lot), is also located at the James P. Deyo Regional Complex.



Location

Area Maintained by:

Type

Acreege Event Space (sf) Shared Use

Restrooms Water Fountains Play grounds Water Feature

Ramadas Field Lights Lights Parking lot Walking Path (If)

Pumping Plant Shade covers Storage Fencing Trees



Recreation Facilities

- Pool
- Skate Facility
- Baseball Fields
- Soccer Fields
- Softball Fields
- Crows Nest
- Basketball Court
- Tennis Courts
- Volleyball Court
- Gymnasium
- Exercise Facility
- Bocce Courts
- Handball Court
- Horseshoe Pit

Improvements Needed

Jennifer Wilson Park

Jennifer Wilson Memorial Park is a small ¼ acre retention basin in the 1300 block of Colorado Street. It services the housing community and the neighborhoods in the immediate area. It was the City's first attempt to use a retention basin as a multi-use facility. The park includes a playground and a small ramada. This facility is also known as North Caballeros Park.



Location

Area Maintained by:

Type

Acreeage Event Space (sf) Shared Use

Restrooms Water Fountains Play grounds Water Feature

Ramadas Field Lights Lights Parking lot Walking Path (If)

Pumping Plant Shade covers Storage Fencing Trees



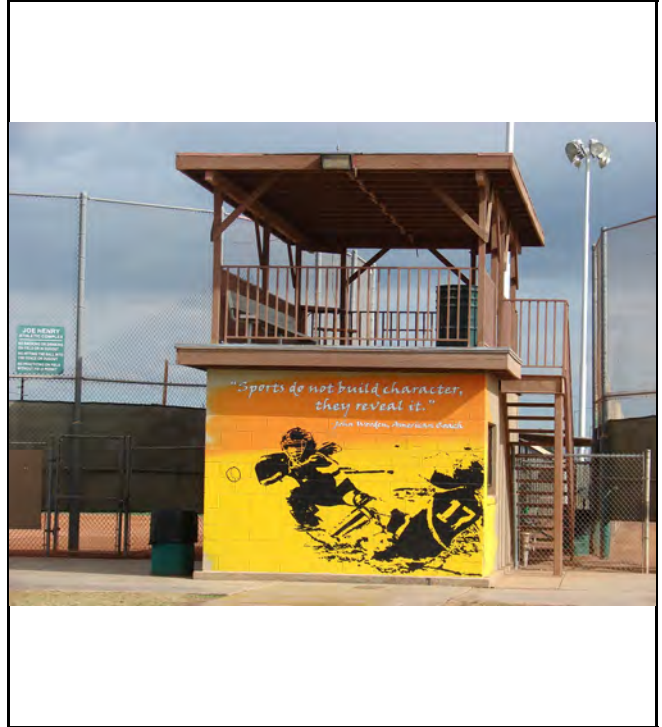
Recreation Facilities

- | | |
|--|---|
| Pool <input type="text" value="0"/> | Skate Facility <input type="text" value="0"/> |
| Baseball Fields <input type="text" value="0"/> | Soccer Fields <input type="text" value="0"/> |
| Softball Fields <input type="text" value="0"/> | Crows Nest <input type="text" value="0"/> |
| Basketball Court <input type="text" value="0"/> | Tennis Courts <input type="text" value="0"/> |
| Volleyball Court <input type="text" value="0"/> | Gymnasium <input type="text" value="0"/> |
| Exercise Facility <input type="text" value="0"/> | Bocce Courts <input type="text" value="0"/> |
| Handball Court <input type="text" value="0"/> | Horseshoe Pit <input type="text" value="0"/> |

Improvements Needed

Joe Henry Athletic

This athletic field is part of the Joe Henry Memorial Park complex. The site contains 2 softball fields, a crows nest and a volleyball court.



Location

Area Maintained by:

Type

Acreage Event Space (sf) Shared Use

Restrooms Water Fountains Play grounds Water Feature

Ramadas Field Lights Lights Parking lot Walking Path (If)

Pumping Plant Shade covers Storage Fencing Trees



Recreation Facilities

- | | |
|--|---|
| Pool <input type="text" value="0"/> | Skate Facility <input type="text" value="0"/> |
| Baseball Fields <input type="text" value="0"/> | Soccer Fields <input type="text" value="0"/> |
| Softball Fields <input type="text" value="2"/> | Crows Nest <input type="text" value="1"/> |
| Basketball Court <input type="text" value="0"/> | Tennis Courts <input type="text" value="0"/> |
| Volleyball Court <input type="text" value="1"/> | Gymnasium <input type="text" value="0"/> |
| Exercise Facility <input type="text" value="0"/> | Bocce Courts <input type="text" value="0"/> |
| Handball Court <input type="text" value="0"/> | Horseshoe Pit <input type="text" value="0"/> |

Improvements Needed

New roofing for Crows Nest. Replace chain link fence.

Joe Henry Memorial Park

The main portion of this 23-acre complex is developed for picnic and passive activities. This unique park is located in an old eucalyptus tree grove and contains some of the City’s oldest and largest trees. The site offers: two lighted softball fields (Joe Henry Athletic Fields - 5 acres), a play apparatus, three ramadas, outdoor grills, picnic tables, open play area to the south (Shaw Fields - 8 acres) and off street parking. This park also provides a connection with the Colorado River Levee Linear Park. This facility contains Ramadas #1-southeast corner, #28-northeast side and #31-southwest side.



Location

Area Maintained by:

Type

Acreege Event Space (sf) Shared Use

Restrooms Water Fountains Play grounds Water Feature

Ramadas Field Lights Lights Parking lot Walking Path (If)

Pumping Plant Shade covers Storage Fencing Trees



Recreation Facilities

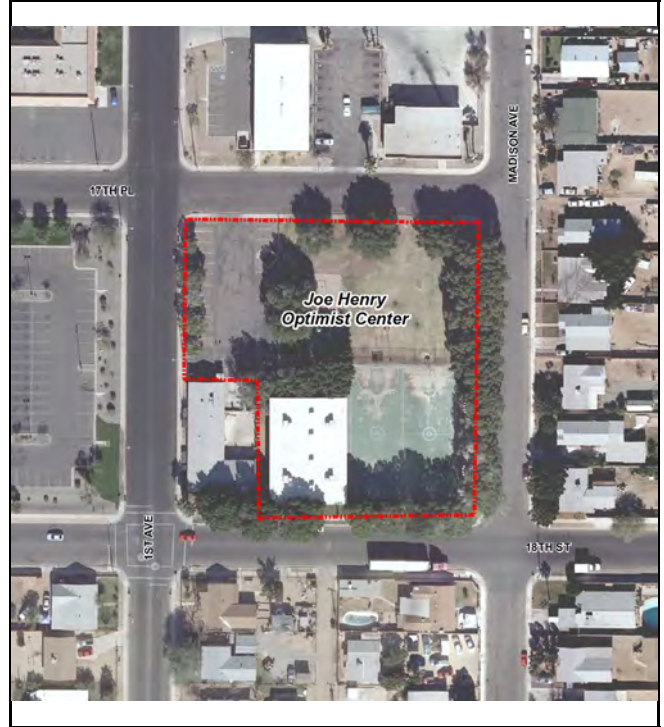
- | | | | |
|-------------------|--------------------------------|----------------|--------------------------------|
| Pool | <input type="text" value="0"/> | Skate Facility | <input type="text" value="0"/> |
| Baseball Fields | <input type="text" value="0"/> | Soccer Fields | <input type="text" value="0"/> |
| Softball Fields | <input type="text" value="0"/> | Crows Nest | <input type="text" value="0"/> |
| Basketball Court | <input type="text" value="0"/> | Tennis Courts | <input type="text" value="0"/> |
| Volleyball Court | <input type="text" value="1"/> | Gymnasium | <input type="text" value="0"/> |
| Exercise Facility | <input type="text" value="0"/> | Bocce Courts | <input type="text" value="0"/> |
| Handball Court | <input type="text" value="0"/> | Horseshoe Pit | <input type="text" value="0"/> |

Improvements Needed

Playground shade covers (2). Replace Ramada.

Joe Henry Optimist Center (JHOC)

The Joe Henry Optimist Center includes open space, a playground, two outdoor basketball courts and a gymnasium. The gymnasium can accommodate one basketball or volleyball court or two badminton courts, with a spectator area.



Location

Area Maintained by:

Type

Acreege Event Space (sf) Shared Use

Restrooms Water Fountains Play grounds Water Feature

Ramadas Field Lights Lights Parking lot Walking Path (If)

Pumping Plant Shade covers Storage Fencing Trees



Recreation Facilities

| | | | |
|-------------------|--------------------------------|----------------|--------------------------------|
| Pool | <input type="text" value="0"/> | Skate Facility | <input type="text" value="0"/> |
| Baseball Fields | <input type="text" value="0"/> | Soccer Fields | <input type="text" value="0"/> |
| Softball Fields | <input type="text" value="0"/> | Crows Nest | <input type="text" value="0"/> |
| Basketball Court | <input type="text" value="2"/> | Tennis Courts | <input type="text" value="0"/> |
| Volleyball Court | <input type="text" value="0"/> | Gymnasium | <input type="text" value="1"/> |
| Exercise Facility | <input type="text" value="0"/> | Bocce Courts | <input type="text" value="0"/> |
| Handball Court | <input type="text" value="0"/> | Horseshoe Pit | <input type="text" value="0"/> |

Improvements Needed

Seal cracks and re stripe outdoor basketball courts. Work on fencing around basketball court. Replace two slides on playground. Paint playground and swings.

Keegan Athletic

This 4-acre athletic facility is part of the Kennedy Park Athletic Complex. This site contains a softball field lit for night play and a crows nest. The crows nest was built in house and does not include a restroom.



Location

Area Maintained by:

Type

Acreage Event Space (sf) Shared Use

Restrooms Water Fountains Play grounds Water Feature

Ramadas Field Lights Lights Parking lot Walking Path (If)

Pumping Plant Shade covers Storage Fencing Trees



Recreation Facilities

| | |
|--|---|
| Pool <input type="text" value="0"/> | Skate Facility <input type="text" value="0"/> |
| Baseball Fields <input type="text" value="0"/> | Soccer Fields <input type="text" value="0"/> |
| Softball Fields <input type="text" value="1"/> | Crows Nest <input type="text" value="1"/> |
| Basketball Court <input type="text" value="0"/> | Tennis Courts <input type="text" value="0"/> |
| Volleyball Court <input type="text" value="0"/> | Gymnasium <input type="text" value="0"/> |
| Exercise Facility <input type="text" value="0"/> | Bocce Courts <input type="text" value="0"/> |
| Handball Court <input type="text" value="0"/> | Horseshoe Pit <input type="text" value="0"/> |

Improvements Needed

Change out all fence and screening for crows nest and fence,new restrooms add new stabilizer.

Kennedy Athletic

This 10-acre athletic facility is a part of the Kennedy Park Athletic Complex. This area contains 2 softball fields and 2 soccer fields with lighting for night play. This facility also contains Ramada #17 at the northeast corner.



Location

Area Maintained by:

Type

Acreage Event Space (sf) Shared Use

Restrooms Water Fountains Play grounds Water Feature

Ramadas Field Lights Lights Parking lot Walking Path (If)

Pumping Plant Shade covers Storage Fencing Trees



Recreation Facilities

| | | | |
|-------------------|--------------------------------|----------------|--------------------------------|
| Pool | <input type="text" value="0"/> | Skate Facility | <input type="text" value="0"/> |
| Baseball Fields | <input type="text" value="0"/> | Soccer Fields | <input type="text" value="2"/> |
| Softball Fields | <input type="text" value="2"/> | Crows Nest | <input type="text" value="1"/> |
| Basketball Court | <input type="text" value="0"/> | Tennis Courts | <input type="text" value="0"/> |
| Volleyball Court | <input type="text" value="0"/> | Gymnasium | <input type="text" value="0"/> |
| Exercise Facility | <input type="text" value="0"/> | Bocce Courts | <input type="text" value="0"/> |
| Handball Court | <input type="text" value="0"/> | Horseshoe Pit | <input type="text" value="0"/> |

Improvements Needed

Change out all fence and screening, new roof and floor for crows nest, add new stabilizer.

Kennedy Memorial Park Complex

This 32-acre park includes: three lighted softball fields, a 1/2 mile walking/jogging path, two lighted soccer/football fields, an in-line hockey arena, skateboard facility, four sand volleyball courts, and six ramadas. The complex offers a 50 meter competition pool and children’s wading pool, with a 212 foot water slide. This site contains Keegan Field (4 acres), Kennedy Park Athletic Fields (10 acres) and Kennedy Park (18 acres). This facility contains Ramadas #5-south of pool, #6-southwest corner of park, #16-60' by 30' on east side of park, #17-at athletic complex, #26-closest to Kennedy Lane and #27-closest to volleyball courts.



Location

Area Maintained by:

Type

Acreage Event Space (sf) Shared Use

Restrooms Water Fountains Play grounds Water Feature

Ramadas Field Lights Lights Parking lot Walking Path (lf)

Pumping Plant Shade covers Storage Fencing Trees



Recreation Facilities

| | |
|--|---|
| Pool <input type="text" value="1"/> | Skate Facility <input type="text" value="1"/> |
| Baseball Fields <input type="text" value="0"/> | Soccer Fields <input type="text" value="0"/> |
| Softball Fields <input type="text" value="0"/> | Crows Nest <input type="text" value="0"/> |
| Basketball Court <input type="text" value="1"/> | Tennis Courts <input type="text" value="0"/> |
| Volleyball Court <input type="text" value="4"/> | Gymnasium <input type="text" value="0"/> |
| Exercise Facility <input type="text" value="0"/> | Bocce Courts <input type="text" value="0"/> |
| Handball Court <input type="text" value="0"/> | Horseshoe Pit <input type="text" value="11"/> |

Improvements Needed

Seal cracks and re stripe basket ball court, install new light at horseshoe pit, paint swings and Ramada’s. Improve fencing around the maintenance facilities, particularly the easternmost storage area.

Kiwanis Park

This facility is a joint-use stormwater retention basin and neighborhood park. The site also includes a 1/2 mile walking path.



Location

Area Maintained by:

Type

Acreege Event Space (sf) Shared Use

Restrooms Water Fountains Play grounds Water Feature

Ramadas Field Lights Lights Parking lot Walking Path (If)

Pumping Plant Shade covers Storage Fencing Trees



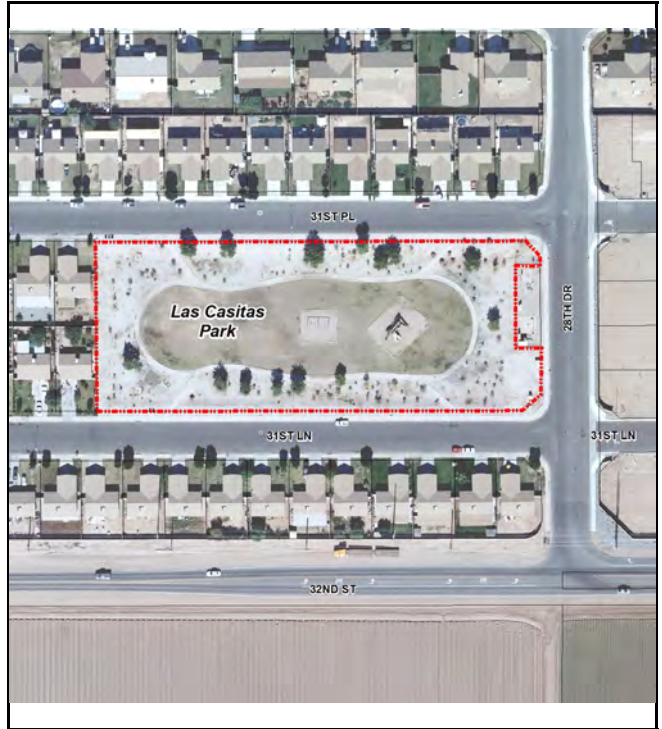
Recreation Facilities

| | |
|--|---|
| Pool <input type="text" value="0"/> | Skate Facility <input type="text" value="0"/> |
| Baseball Fields <input type="text" value="0"/> | Soccer Fields <input type="text" value="1"/> |
| Softball Fields <input type="text" value="0"/> | Crows Nest <input type="text" value="0"/> |
| Basketball Court <input type="text" value="0"/> | Tennis Courts <input type="text" value="0"/> |
| Volleyball Court <input type="text" value="0"/> | Gymnasium <input type="text" value="0"/> |
| Exercise Facility <input type="text" value="0"/> | Bocce Courts <input type="text" value="0"/> |
| Handball Court <input type="text" value="0"/> | Horseshoe Pit <input type="text" value="0"/> |

Improvements Needed

Las Casitas Park

This facility was built in conjunction with the Las Casitas subdivision. It is a joint use neighborhood park for the area residents and a stormwater retention basin.



Location

Area Maintained by:

Type

Acreeage Event Space (sf) Shared Use

Restrooms Water Fountains Play grounds Water Feature

Ramadas Field Lights Lights Parking lot Walking Path (lf)

Pumping Plant Shade covers Storage Fencing Trees



Recreation Facilities

- | | |
|--|---|
| Pool <input type="text" value="0"/> | Skate Facility <input type="text" value="0"/> |
| Baseball Fields <input type="text" value="0"/> | Soccer Fields <input type="text" value="0"/> |
| Softball Fields <input type="text" value="0"/> | Crows Nest <input type="text" value="0"/> |
| Basketball Court <input type="text" value="0"/> | Tennis Courts <input type="text" value="0"/> |
| Volleyball Court <input type="text" value="0"/> | Gymnasium <input type="text" value="0"/> |
| Exercise Facility <input type="text" value="0"/> | Bocce Courts <input type="text" value="0"/> |
| Handball Court <input type="text" value="0"/> | Horseshoe Pit <input type="text" value="0"/> |

Improvements Needed

Concrete Sidewalk Repairs/DG improvements/ Irrigation Controller Upgrades/ Playground Shade Cover

Library Park

Library Park applies to the 3 acres of green open space surrounding the Heritage Branch of the Yuma County Library. This area provides a public gathering place for the central core of Yuma. Special art exhibits and events occur seasonally in this space, and future expansion of arts and culture programming is planned.



Location

Area Maintained by:

Type

Acreeage Event Space (sf) Shared Use

Restrooms Water Fountains Play grounds Water Feature

Ramadas Field Lights Lights Parking lot Walking Path (If)

Pumping Plant Shade covers Storage Fencing Trees



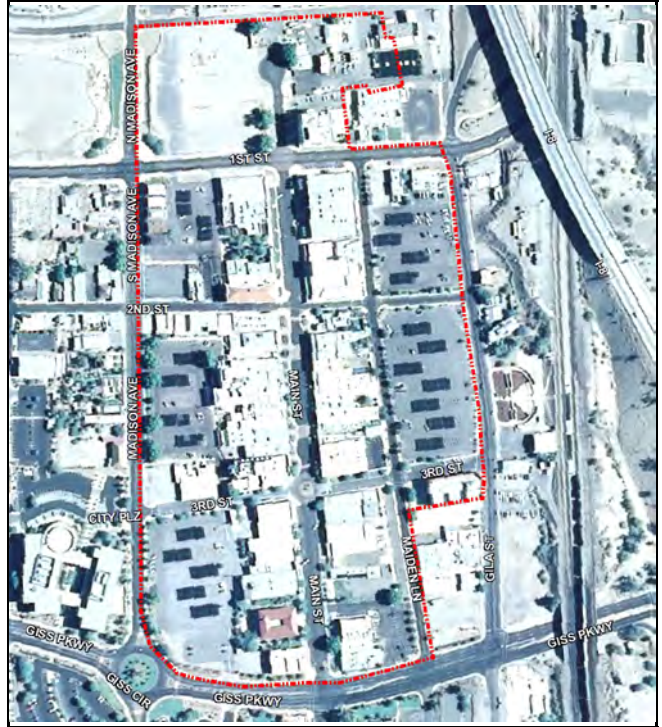
Recreation Facilities

- | | |
|--|---|
| Pool <input type="text" value="0"/> | Skate Facility <input type="text" value="0"/> |
| Baseball Fields <input type="text" value="0"/> | Soccer Fields <input type="text" value="0"/> |
| Softball Fields <input type="text" value="0"/> | Crows Nest <input type="text" value="0"/> |
| Basketball Court <input type="text" value="0"/> | Tennis Courts <input type="text" value="0"/> |
| Volleyball Court <input type="text" value="0"/> | Gymnasium <input type="text" value="0"/> |
| Exercise Facility <input type="text" value="0"/> | Bocce Courts <input type="text" value="0"/> |
| Handball Court <input type="text" value="0"/> | Horseshoe Pit <input type="text" value="0"/> |

Improvements Needed

Mall Maintenance District

The City of Yuma maintains the open spaces downtown in conjunction with a Mall Maintenance District that funds this effort. Main Street has always been a center of activity. During 1849, more than 60,000 travelers heading to the California gold fields followed Main Street to the rope ferry that would carry them across the Colorado. Most buildings that now stand on Main Street date to the 1920s. The last decade has brought new life to the old downtown and the riverfront. Milestones include a new city hall and restoration of the Ocean-to-Ocean Bridge (2002), the debut of the Yuma Art Center in 2004, and the reopening of Main Street to vehicle traffic in 2007, with a "convertible road" that accommodates a variety of festivals and events.



Location

Area Maintained by:

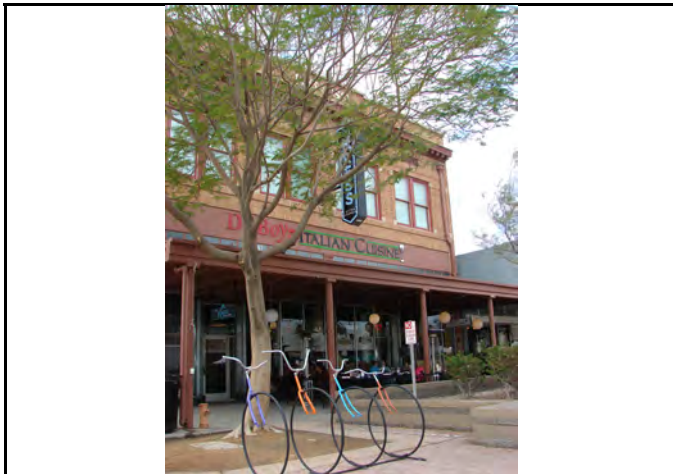
Type

Acreege Event Space (sf) Shared Use

Restrooms Water Fountains Play grounds Water Feature

Ramadas Field Lights Lights Parking lot Walking Path (If)

Pumping Plant Shade covers Storage Fencing Trees



Recreation Facilities

| | |
|--|---|
| Pool <input type="text" value="0"/> | Skate Facility <input type="text" value="0"/> |
| Baseball Fields <input type="text" value="0"/> | Soccer Fields <input type="text" value="0"/> |
| Softball Fields <input type="text" value="0"/> | Crows Nest <input type="text" value="0"/> |
| Basketball Court <input type="text" value="0"/> | Tennis Courts <input type="text" value="0"/> |
| Volleyball Court <input type="text" value="0"/> | Gymnasium <input type="text" value="0"/> |
| Exercise Facility <input type="text" value="0"/> | Bocce Courts <input type="text" value="0"/> |
| Handball Court <input type="text" value="0"/> | Horseshoe Pit <input type="text" value="0"/> |

Improvements Needed

Marcus Park

This 2-acre facility is a small neighborhood park that also contains Marcus Pool. Marcus Pool includes a bathroom with showers available to pool patrons.



Location

Area Maintained by:

Type

Acreage Event Space (sf) Shared Use

Restrooms Water Fountains Play grounds Water Feature

Ramadas Field Lights Lights Parking lot Walking Path (If)

Pumping Plant Shade covers Storage Fencing Trees



Recreation Facilities

| | |
|--|---|
| Pool <input type="text" value="1"/> | Skate Facility <input type="text" value="0"/> |
| Baseball Fields <input type="text" value="0"/> | Soccer Fields <input type="text" value="0"/> |
| Softball Fields <input type="text" value="0"/> | Crows Nest <input type="text" value="0"/> |
| Basketball Court <input type="text" value="0"/> | Tennis Courts <input type="text" value="0"/> |
| Volleyball Court <input type="text" value="0"/> | Gymnasium <input type="text" value="0"/> |
| Exercise Facility <input type="text" value="0"/> | Bocce Courts <input type="text" value="0"/> |
| Handball Court <input type="text" value="0"/> | Horseshoe Pit <input type="text" value="0"/> |

Improvements Needed

Playground shade cover

Netwest Park

This 3-acre neighborhood park was developed in conjunction with the Rio Sante Fe apartment complex to the west. This facility contains Ramada #12 and a 1/3 mile walking path.



Location

Area Maintained by:

Type

Acreege Event Space (sf) Shared Use

Restrooms Water Fountains Play grounds Water Feature

Ramadas Field Lights Lights Parking lot Walking Path (lf)

Pumping Plant Shade covers Storage Fencing Trees



Recreation Facilities

- | | |
|--|---|
| Pool <input type="text" value="0"/> | Skate Facility <input type="text" value="0"/> |
| Baseball Fields <input type="text" value="0"/> | Soccer Fields <input type="text" value="0"/> |
| Softball Fields <input type="text" value="0"/> | Crows Nest <input type="text" value="0"/> |
| Basketball Court <input type="text" value="0"/> | Tennis Courts <input type="text" value="0"/> |
| Volleyball Court <input type="text" value="0"/> | Gymnasium <input type="text" value="0"/> |
| Exercise Facility <input type="text" value="0"/> | Bocce Courts <input type="text" value="0"/> |
| Handball Court <input type="text" value="0"/> | Horseshoe Pit <input type="text" value="0"/> |

Improvements Needed

Playground shade cover

North End Community Center

This center provides meeting rooms and craft facilities. Programs for youth through adult are programmed at this center.



Location

Area Maintained by:

Type

Acreege Event Space (sf) Shared Use

Restrooms Water Fountains Play grounds Water Feature

Ramadas Field Lights Lights Parking lot Walking Path (If)

Pumping Plant Shade covers Storage Fencing Trees



Recreation Facilities

| | | | |
|-------------------|--------------------------------|----------------|--------------------------------|
| Pool | <input type="text" value="0"/> | Skate Facility | <input type="text" value="0"/> |
| Baseball Fields | <input type="text" value="0"/> | Soccer Fields | <input type="text" value="0"/> |
| Softball Fields | <input type="text" value="0"/> | Crows Nest | <input type="text" value="0"/> |
| Basketball Court | <input type="text" value="0"/> | Tennis Courts | <input type="text" value="0"/> |
| Volleyball Court | <input type="text" value="0"/> | Gymnasium | <input type="text" value="0"/> |
| Exercise Facility | <input type="text" value="0"/> | Bocce Courts | <input type="text" value="0"/> |
| Handball Court | <input type="text" value="0"/> | Horseshoe Pit | <input type="text" value="0"/> |

Improvements Needed

Ocotillo Park

This facility was built in conjunction with the Ocotillo subdivision. It is a joint use neighborhood park for the area residents and a stormwater retention basin. This site has a basketball court, playground, walking path and sufficient green space to support two soccer practice fields.



Location

Area Maintained by:

Type

Acreage Event Space (sf) Shared Use

Restrooms Water Fountains Play grounds Water Feature

Ramadas Field Lights Lights Parking lot Walking Path (lf)

Pumping Plant Shade covers Storage Fencing Trees



Recreation Facilities

| | | | |
|-------------------|--------------------------------|----------------|--------------------------------|
| Pool | <input type="text" value="0"/> | Skate Facility | <input type="text" value="0"/> |
| Baseball Fields | <input type="text" value="0"/> | Soccer Fields | <input type="text" value="0"/> |
| Softball Fields | <input type="text" value="0"/> | Crows Nest | <input type="text" value="0"/> |
| Basketball Court | <input type="text" value="1"/> | Tennis Courts | <input type="text" value="0"/> |
| Volleyball Court | <input type="text" value="0"/> | Gymnasium | <input type="text" value="0"/> |
| Exercise Facility | <input type="text" value="0"/> | Bocce Courts | <input type="text" value="0"/> |
| Handball Court | <input type="text" value="0"/> | Horseshoe Pit | <input type="text" value="0"/> |

Improvements Needed

Parkway Place Park

This facility was built in conjunction with the Parkway Place subdivision. It is a joint use neighborhood park for the area residents and a stormwater retention basin. The site contains a basketball court, grass field area and a swing set.



Location

Area Maintained by:

Type

Acreege Event Space (sf) Shared Use

Restrooms Water Fountains Play grounds Water Feature

Ramadas Field Lights Lights Parking lot Walking Path (lf)

Pumping Plant Shade covers Storage Fencing Trees



Recreation Facilities

| | | | |
|-------------------|--------------------------------|----------------|--------------------------------|
| Pool | <input type="text" value="0"/> | Skate Facility | <input type="text" value="0"/> |
| Baseball Fields | <input type="text" value="0"/> | Soccer Fields | <input type="text" value="0"/> |
| Softball Fields | <input type="text" value="0"/> | Crows Nest | <input type="text" value="0"/> |
| Basketball Court | <input type="text" value="1"/> | Tennis Courts | <input type="text" value="0"/> |
| Volleyball Court | <input type="text" value="0"/> | Gymnasium | <input type="text" value="0"/> |
| Exercise Facility | <input type="text" value="0"/> | Bocce Courts | <input type="text" value="0"/> |
| Handball Court | <input type="text" value="0"/> | Horseshoe Pit | <input type="text" value="0"/> |

Improvements Needed

Concrete Sidewalk repairs/DG improvements/ Irrigation Controller Upgrades, Shade Cover for Playground

Ponderosa Park

This facility was built in conjunction with the Ponderosa and Edenwood subdivisions. It is a joint use neighborhood park for the area residents and a stormwater retention basin. The site contains a playground and grass area.



Location

Area Maintained by:

Type

Acreege Event Space (sf) Shared Use

Restrooms Water Fountains Play grounds Water Feature

Ramadas Field Lights Lights Parking lot Walking Path (lf)

Pumping Plant Shade covers Storage Fencing Trees



Recreation Facilities

- | | |
|--|---|
| Pool <input type="text" value="0"/> | Skate Facility <input type="text" value="0"/> |
| Baseball Fields <input type="text" value="0"/> | Soccer Fields <input type="text" value="0"/> |
| Softball Fields <input type="text" value="0"/> | Crows Nest <input type="text" value="0"/> |
| Basketball Court <input type="text" value="0"/> | Tennis Courts <input type="text" value="0"/> |
| Volleyball Court <input type="text" value="0"/> | Gymnasium <input type="text" value="0"/> |
| Exercise Facility <input type="text" value="0"/> | Bocce Courts <input type="text" value="0"/> |
| Handball Court <input type="text" value="0"/> | Horseshoe Pit <input type="text" value="0"/> |

Improvements Needed

DG Improvements/ Concrete Sidewalk Repairs/ Irrigation Controller Upgrades

Ray Kroc Complex

Ray Kroc Complex is a 25 acre facility consisting of four baseball fields, five batting cages, and a stadium soccer field. This unique assemblage of professional facilities was once used by the San Diego Padres and Yakult Swallows baseball teams for spring training and exhibition games. The stadium seats 6,878 people and includes a clubhouse/recreation building. Parking for the facility is shared with the nearby Yuma Civic Center.



Location

Area Maintained by:

Type

Acreege Event Space (sf) Shared Use

Restrooms Water Fountains Play grounds Water Feature

Ramadas Field Lights Lights Parking lot Walking Path (If)

Pumping Plant Shade covers Storage Fencing Trees



Recreation Facilities

| | | | |
|-------------------|--------------------------------|----------------|--------------------------------|
| Pool | <input type="text" value="0"/> | Skate Facility | <input type="text" value="0"/> |
| Baseball Fields | <input type="text" value="3"/> | Soccer Fields | <input type="text" value="1"/> |
| Softball Fields | <input type="text" value="0"/> | Crows Nest | <input type="text" value="0"/> |
| Basketball Court | <input type="text" value="0"/> | Tennis Courts | <input type="text" value="0"/> |
| Volleyball Court | <input type="text" value="0"/> | Gymnasium | <input type="text" value="0"/> |
| Exercise Facility | <input type="text" value="0"/> | Bocce Courts | <input type="text" value="0"/> |
| Handball Court | <input type="text" value="0"/> | Horseshoe Pit | <input type="text" value="0"/> |

Improvements Needed

Replace Clubhouse Ramada/ Stadium and Clubhouse Parking Lot Replacement/ Ticket Booth Upgrades/ Field One Batter Eye Replacement/ Fields 2&3 Dugout Shade Structures/ Fields 2&3 Outfield Lights/ Batting Cage Storage Building Replacement/ Batting Cage Net Replacements/ Fields 1-5 Stabilizer Reconditioning/ Field Fence Tarp Replacements/Stadium & Warning Track Reconditioning/ Irrigation Controller Upgrades

Riverfront Regional Park

The 414 developed acreage of the Riverfront Regional Park and Wetlands Area, features the West Wetlands Park, Gateway Park and Riverside Park, and the ongoing restoration of the East Wetlands. This facility includes open space, natural and re-forestation areas, the Stewart Vincent Wolfe Creative Playground, the Riverside Outdoor Education Center as well as paths and trails linking and running the length of the regional park.



Location

Area Maintained by:

Type

Acreage Event Space (sf) Shared Use

Restrooms Water Fountains Play grounds Water Feature

Ramadas Field Lights Lights Parking lot Walking Path (If)

Pumping Plant Shade covers Storage Fencing Trees



Recreation Facilities

- Pool
- Skate Facility
- Baseball Fields
- Soccer Fields
- Softball Fields
- Crows Nest
- Basketball Court
- Tennis Courts
- Volleyball Court
- Gymnasium
- Exercise Facility
- Bocce Courts
- Handball Court
- Horseshoe Pit

Improvements Needed

Riverside Cottage

This cottage has a small open area classroom/meeting room with a bathroom. The center is located north of Riverside Park and is within walking distance to the Colorado River.



Location

Area Maintained by:

Type

Acreege Event Space (sf) Shared Use

Restrooms Water Fountains Play grounds Water Feature

Ramadas Field Lights Lights Parking lot Walking Path (If)

Pumping Plant Shade covers Storage Fencing Trees



Recreation Facilities

- | | |
|--|---|
| Pool <input type="text" value="0"/> | Skate Facility <input type="text" value="0"/> |
| Baseball Fields <input type="text" value="0"/> | Soccer Fields <input type="text" value="0"/> |
| Softball Fields <input type="text" value="0"/> | Crows Nest <input type="text" value="0"/> |
| Basketball Court <input type="text" value="0"/> | Tennis Courts <input type="text" value="0"/> |
| Volleyball Court <input type="text" value="0"/> | Gymnasium <input type="text" value="0"/> |
| Exercise Facility <input type="text" value="0"/> | Bocce Courts <input type="text" value="0"/> |
| Handball Court <input type="text" value="0"/> | Horseshoe Pit <input type="text" value="0"/> |

Improvements Needed

Riverside Park

Riverside Park is located below the Yuma Territorial Prison State Park. The site contains open space and a ramada. 2 acres of the park is developed with 7.5 acres cleared for future expansion of the park space. This facility contains Ramada #14.



Location

Area Maintained by:

Type

Acreege Event Space (sf) Shared Use

Restrooms Water Fountains Play grounds Water Feature

Ramadas Field Lights Lights Parking lot Walking Path (If)

Pumping Plant Shade covers Storage Fencing Trees



Recreation Facilities

- | | |
|--|---|
| Pool <input type="text" value="0"/> | Skate Facility <input type="text" value="0"/> |
| Baseball Fields <input type="text" value="0"/> | Soccer Fields <input type="text" value="0"/> |
| Softball Fields <input type="text" value="0"/> | Crows Nest <input type="text" value="0"/> |
| Basketball Court <input type="text" value="0"/> | Tennis Courts <input type="text" value="0"/> |
| Volleyball Court <input type="text" value="0"/> | Gymnasium <input type="text" value="0"/> |
| Exercise Facility <input type="text" value="0"/> | Bocce Courts <input type="text" value="0"/> |
| Handball Court <input type="text" value="0"/> | Horseshoe Pit <input type="text" value="0"/> |

Improvements Needed

Roxaboxen Park

Roxaboxen Park is unique to Yuma and was inspired by the internationally known children’s book Roxaboxen, written by Alice McLerran about her mother, Marion Doan’s childhood memories of growing up in Yuma in the early 1900’s. The ½ acre site at the corner of 2nd Avenue and 8th Street is not a typical park. There is no grass or playground equipment. Instead, the park is left much as it was in the 1900’s with the addition of an ADA accessible pedestrian path, informational displays, and seating areas. Children playing at the site are encouraged to use their imaginations and build a community utilizing rocks and boxes like the original “Roxaboxenites”.



Location

Area Maintained by:

Type

Acreege Event Space (sf) Shared Use

Restrooms Water Fountains Play grounds Water Feature

Ramadas Field Lights Lights Parking lot Walking Path (If)

Pumping Plant Shade covers Storage Fencing Trees



Recreation Facilities

- Pool
- Skate Facility
- Baseball Fields
- Soccer Fields
- Softball Fields
- Crows Nest
- Basketball Court
- Tennis Courts
- Volleyball Court
- Gymnasium
- Exercise Facility
- Bocce Courts
- Handball Court
- Horseshoe Pit

Improvements Needed

Saguaro Park

This facility was built in conjunction with the Saguaro subdivision. It is a joint use neighborhood park for the area residents and a stormwater retention basin. The site contains a playground, a 1/4 mile walking path and grass area.



Location

Area Maintained by:

Type

Acreage Event Space (sf) Shared Use

Restrooms Water Fountains Play grounds Water Feature

Ramadas Field Lights Lights Parking lot Walking Path (lf)

Pumping Plant Shade covers Storage Fencing Trees



Recreation Facilities

- | | |
|--|---|
| Pool <input type="text" value="0"/> | Skate Facility <input type="text" value="0"/> |
| Baseball Fields <input type="text" value="0"/> | Soccer Fields <input type="text" value="0"/> |
| Softball Fields <input type="text" value="0"/> | Crows Nest <input type="text" value="0"/> |
| Basketball Court <input type="text" value="0"/> | Tennis Courts <input type="text" value="0"/> |
| Volleyball Court <input type="text" value="0"/> | Gymnasium <input type="text" value="0"/> |
| Exercise Facility <input type="text" value="0"/> | Bocce Courts <input type="text" value="0"/> |
| Handball Court <input type="text" value="0"/> | Horseshoe Pit <input type="text" value="0"/> |

Improvements Needed

Add in new rocks around flooded out area

Sanguinetti Athletic

This 5-acre athletic facility is part of the Carver Park Athletic Complex. The site contains 2 softball fields lit for night games and a crows nest. This facility has one shade cover over the picnic area.



Location

Area Maintained by:

Type

Acreege Event Space (sf) Shared Use

Restrooms Water Fountains Play grounds Water Feature

Ramadas Field Lights Lights Parking lot Walking Path (If)

Pumping Plant Shade covers Storage Fencing Trees



Recreation Facilities

- | | |
|--|---|
| Pool <input type="text" value="0"/> | Skate Facility <input type="text" value="0"/> |
| Baseball Fields <input type="text" value="0"/> | Soccer Fields <input type="text" value="0"/> |
| Softball Fields <input type="text" value="2"/> | Crows Nest <input type="text" value="1"/> |
| Basketball Court <input type="text" value="0"/> | Tennis Courts <input type="text" value="0"/> |
| Volleyball Court <input type="text" value="0"/> | Gymnasium <input type="text" value="0"/> |
| Exercise Facility <input type="text" value="0"/> | Bocce Courts <input type="text" value="0"/> |
| Handball Court <input type="text" value="0"/> | Horseshoe Pit <input type="text" value="0"/> |

Improvements Needed

Resurface parking lot and under bleachers. New restrooms. New roofing for Crows Nest. Replace chain link fence.

Sanguinetti Memorial Park

This 5-acre neighborhood park is surrounded by residential development and Woodard Junior High School. The facility provides open space and field area for team practice. This facility contains Ramadas #13-east side of park, #29-north side of park and #30-south side of park.



Location

Area Maintained by:

Type

Acreege Event Space (sf) Shared Use

Restrooms Water Fountains Play grounds Water Feature

Ramadas Field Lights Lights Parking lot Walking Path (If)

Pumping Plant Shade covers Storage Fencing Trees



Recreation Facilities

| | | | |
|-------------------|--------------------------------|----------------|--------------------------------|
| Pool | <input type="text" value="0"/> | Skate Facility | <input type="text" value="0"/> |
| Baseball Fields | <input type="text" value="0"/> | Soccer Fields | <input type="text" value="0"/> |
| Softball Fields | <input type="text" value="0"/> | Crows Nest | <input type="text" value="0"/> |
| Basketball Court | <input type="text" value="0"/> | Tennis Courts | <input type="text" value="0"/> |
| Volleyball Court | <input type="text" value="1"/> | Gymnasium | <input type="text" value="0"/> |
| Exercise Facility | <input type="text" value="0"/> | Bocce Courts | <input type="text" value="0"/> |
| Handball Court | <input type="text" value="0"/> | Horseshoe Pit | <input type="text" value="0"/> |

Improvements Needed

Redo three grass islands to xeri-escape, paint Ramada's and swing sets, Replace restroom, replace bad bbq grills. Resurface parking area.

Shaw Fields

Located south of Joe Henry Park, Shaw Field is an 8 acre, multi-use, open space/turf facility on property owned by Shaw Industries. The City currently has an agreement with Shaw Industries to utilize their property for a variety of different team sport activities and special events. The site can be figured to support soccer, softball and football depending on league needs. This facility contains a 100 foot by 70 foot artificial field for sports activities. Adjacent lighting allows for night play on this field.



Location

Area Maintained by:

Type

Acreege Event Space (sf) Shared Use

Restrooms Water Fountains Play grounds Water Feature

Ramadas Field Lights Lights Parking lot Walking Path (If)

Pumping Plant Shade covers Storage Fencing Trees



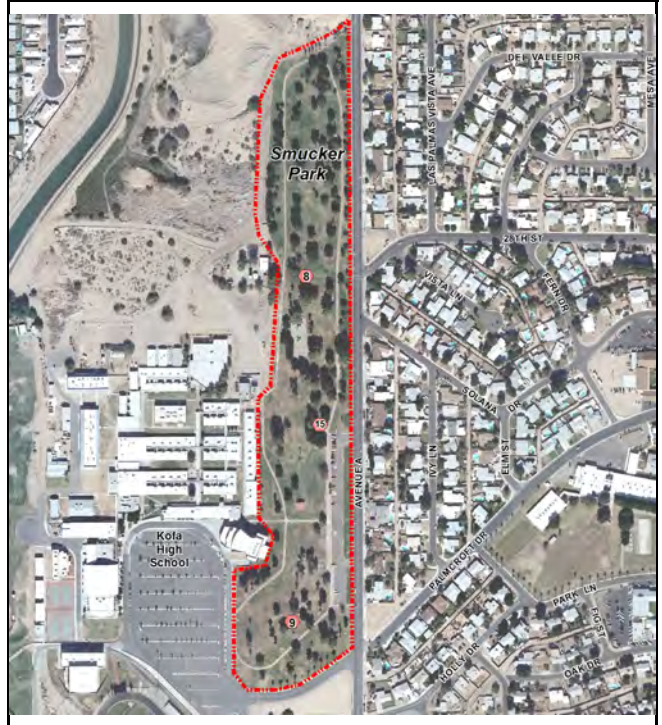
Recreation Facilities

- | | |
|--|---|
| Pool <input type="text" value="0"/> | Skate Facility <input type="text" value="0"/> |
| Baseball Fields <input type="text" value="0"/> | Soccer Fields <input type="text" value="6"/> |
| Softball Fields <input type="text" value="0"/> | Crows Nest <input type="text" value="0"/> |
| Basketball Court <input type="text" value="0"/> | Tennis Courts <input type="text" value="0"/> |
| Volleyball Court <input type="text" value="0"/> | Gymnasium <input type="text" value="0"/> |
| Exercise Facility <input type="text" value="0"/> | Bocce Courts <input type="text" value="0"/> |
| Handball Court <input type="text" value="0"/> | Horseshoe Pit <input type="text" value="0"/> |

Improvements Needed

Smucker Memorial Park

This park has three ramadas, a 1 mile walking/jogging path, exercise stations, play apparatus, and off street parking. A portion of the site is undeveloped. The topography of this park limits formal recreational or sports infrastructure, but offers informal recreational opportunities and a view of the Yuma Valley. 22 acres are currently developed. This facility contains Ramadas #8-center of park, near play area, #9-southwest side of park and #15-east side of park.



Location

Area Maintained by:

Type

Acreege Event Space (sf)

Shared Use

Restrooms Water Fountains Play grounds Water Feature

Ramadas Field Lights Lights Parking lot Walking Path (lf)

Pumping Plant Shade covers Storage Fencing Trees



Recreation Facilities

| | |
|--|---|
| Pool <input type="text" value="0"/> | Skate Facility <input type="text" value="0"/> |
| Baseball Fields <input type="text" value="0"/> | Soccer Fields <input type="text" value="0"/> |
| Softball Fields <input type="text" value="0"/> | Crows Nest <input type="text" value="0"/> |
| Basketball Court <input type="text" value="0"/> | Tennis Courts <input type="text" value="0"/> |
| Volleyball Court <input type="text" value="0"/> | Gymnasium <input type="text" value="0"/> |
| Exercise Facility <input type="text" value="1"/> | Bocce Courts <input type="text" value="0"/> |
| Handball Court <input type="text" value="0"/> | Horseshoe Pit <input type="text" value="0"/> |

Improvements Needed

Upgrade Restroom/ Concrete Sidewalk Repairs/ Ramada 8 Replacement/ Excersise Equipment Upgrades/ Water Storage Tank Replacement/ 10 Picnic Tabels/ Irrigation Controller Upgrades/ Replace playground and Purchase Shade Cover. Restroom in poor condition.

Sunrise Optimist Park

This neighborhood park contains a playground, a 4/10 mile walking path, disc-golf course and open space. The Sunrise R.C. Speedway is located to the north. That facility provides over 34,400 square feet of remote control car track area for RC enthusiasts. Sunrise Optimist Park ties into the Valley Aquatic Center to the northeast. Located to the east are the Cibola High School softball fields that the City has joint use agreement for use. This facility contains Ramadas #18-south side of park and #19-west side of park.



Location

Area Maintained by:

Type

Acreege Event Space (sf) Shared Use

Restrooms Water Fountains Play grounds Water Feature

Ramadas Field Lights Lights Parking lot Walking Path (lf)

Pumping Plant Shade covers Storage Fencing Trees



Recreation Facilities

| | | | |
|-------------------|--------------------------------|----------------|--------------------------------|
| Pool | <input type="text" value="0"/> | Skate Facility | <input type="text" value="0"/> |
| Baseball Fields | <input type="text" value="0"/> | Soccer Fields | <input type="text" value="0"/> |
| Softball Fields | <input type="text" value="0"/> | Crows Nest | <input type="text" value="0"/> |
| Basketball Court | <input type="text" value="0"/> | Tennis Courts | <input type="text" value="0"/> |
| Volleyball Court | <input type="text" value="0"/> | Gymnasium | <input type="text" value="0"/> |
| Exercise Facility | <input type="text" value="1"/> | Bocce Courts | <input type="text" value="0"/> |
| Handball Court | <input type="text" value="0"/> | Horseshoe Pit | <input type="text" value="0"/> |

Improvements Needed

New playground needed. Work on electrical for park irrigation, paint ramadas and exercise equipment

Terraces Park

This neighborhood park contains a playground, walking path, ramada and open space. It is a joint use neighborhood park for the area residents and a stormwater retention basin.



Location

Area Maintained by:

Type

Acreege Event Space (sf) Shared Use

Restrooms Water Fountains Play grounds Water Feature

Ramadas Field Lights Lights Parking lot Walking Path (lf)

Pumping Plant Shade covers Storage Fencing Trees



Recreation Facilities

| | | | |
|-------------------|--------------------------------|----------------|--------------------------------|
| Pool | <input type="text" value="0"/> | Skate Facility | <input type="text" value="0"/> |
| Baseball Fields | <input type="text" value="0"/> | Soccer Fields | <input type="text" value="0"/> |
| Softball Fields | <input type="text" value="0"/> | Crows Nest | <input type="text" value="0"/> |
| Basketball Court | <input type="text" value="0"/> | Tennis Courts | <input type="text" value="0"/> |
| Volleyball Court | <input type="text" value="0"/> | Gymnasium | <input type="text" value="0"/> |
| Exercise Facility | <input type="text" value="0"/> | Bocce Courts | <input type="text" value="0"/> |
| Handball Court | <input type="text" value="0"/> | Horseshoe Pit | <input type="text" value="0"/> |

Improvements Needed

Playground shade cover

The Historic Yuma Theater

The Historic Yuma Theatre is owned and operated by the City of Yuma and located in the historic downtown. The Historic Yuma Theatre forms the centerpiece of the Yuma Art Center. The theatre first opened in 1912 and over the years has survived fires, floods and earthquakes. The Historic Yuma Theatre is 12,000 square feet, seats 640, and contains a thrust stage, raked and balcony seating, concession area, a foyer for art displays, box office, administrative office, and limited support and storage space.



Location

Area Maintained by:

Type

Acreage Event Space (sf) Shared Use

Restrooms Water Fountains Play grounds Water Feature

Ramadas Field Lights Lights Parking lot Walking Path (If)

Pumping Plant Shade covers Storage Fencing Trees



Recreation Facilities

- Pool
- Skate Facility
- Baseball Fields
- Soccer Fields
- Softball Fields
- Crows Nest
- Basketball Court
- Tennis Courts
- Volleyball Court
- Gymnasium
- Exercise Facility
- Bocce Courts
- Handball Court
- Horseshoe Pit

Improvements Needed

The Yuma Art Center

The Yuma Art Center is a 43,000 square foot art and cultural facility comprised of three buildings. The main building houses the Yuma Art Center museum, gift shop, two classrooms, photography darkroom and the Arts and Culture Division Administrative offices. The restored United Building, adjacent to the Yuma Theatre is a poured-in-place concrete structure built in the 1950's. The United Building houses three artist studios and a large multi-purpose room. A patio on the west side of the United Building includes a small outdoor performance stage and pottery kiln yard.



Location

Area Maintained by:

Type

Acreege Event Space (sf) Shared Use

Restrooms Water Fountains Play grounds Water Feature

Ramadas Field Lights Lights Parking lot Walking Path (If)

Pumping Plant Shade covers Storage Fencing Trees



Recreation Facilities

- | | |
|--|---|
| Pool <input type="text" value="0"/> | Skate Facility <input type="text" value="0"/> |
| Baseball Fields <input type="text" value="0"/> | Soccer Fields <input type="text" value="0"/> |
| Softball Fields <input type="text" value="0"/> | Crows Nest <input type="text" value="0"/> |
| Basketball Court <input type="text" value="0"/> | Tennis Courts <input type="text" value="0"/> |
| Volleyball Court <input type="text" value="0"/> | Gymnasium <input type="text" value="0"/> |
| Exercise Facility <input type="text" value="0"/> | Bocce Courts <input type="text" value="0"/> |
| Handball Court <input type="text" value="0"/> | Horseshoe Pit <input type="text" value="0"/> |

Improvements Needed

Victoria Meadows Park

This facility was built in conjunction with the Victoria Meadows subdivision. It is a joint use neighborhood park for the area residents and a stormwater retention basin. The site contains a playground and grass area.



Location

Area Maintained by:

Type

Acreege Event Space (sf) Shared Use

Restrooms Water Fountains Play grounds Water Feature

Ramadas Field Lights Lights Parking lot Walking Path (If)

Pumping Plant Shade covers Storage Fencing Trees



Recreation Facilities

| | |
|--|---|
| Pool <input type="text" value="0"/> | Skate Facility <input type="text" value="0"/> |
| Baseball Fields <input type="text" value="0"/> | Soccer Fields <input type="text" value="0"/> |
| Softball Fields <input type="text" value="0"/> | Crows Nest <input type="text" value="0"/> |
| Basketball Court <input type="text" value="0"/> | Tennis Courts <input type="text" value="0"/> |
| Volleyball Court <input type="text" value="0"/> | Gymnasium <input type="text" value="0"/> |
| Exercise Facility <input type="text" value="0"/> | Bocce Courts <input type="text" value="0"/> |
| Handball Court <input type="text" value="0"/> | Horseshoe Pit <input type="text" value="0"/> |

Improvements Needed

Add plants back into rock area and redo subsoil under 20th Drive benches.

West Wetlands Park

The West Wetlands Park is approximately 50% completed with 51.7 acres developed. Approximately 25 acres of the “lower bench” are restored with native trees and grasses, and an additional 27 acres of the “upper bench” are developed with a lake, picnic ramadas, a disc golf course, parking, lighting and landscaping. The park includes a burrowing owl habitat, the Arizona Public Service Solar Demonstration Garden completed in 2005, the Stewart Vincent Wolfe Memorial Playground, a privately-funded historic statue, and expanded open space. This facility contains Ramadas #32-south of pond, #33-north of pond, #34-west of pond near playground, #35-near Hummingbird Garden and #36-near Hummingbird Garden.



Location

Area Maintained by:

Type

Acreege Event Space (sf) Shared Use

Restrooms Water Fountains Play grounds Water Feature

Ramadas Field Lights Lights Parking lot Walking Path (If)

Pumping Plant Shade covers Storage Fencing Trees



Recreation Facilities

| | |
|--|---|
| Pool <input type="text" value="0"/> | Skate Facility <input type="text" value="0"/> |
| Baseball Fields <input type="text" value="0"/> | Soccer Fields <input type="text" value="0"/> |
| Softball Fields <input type="text" value="0"/> | Crows Nest <input type="text" value="0"/> |
| Basketball Court <input type="text" value="0"/> | Tennis Courts <input type="text" value="0"/> |
| Volleyball Court <input type="text" value="0"/> | Gymnasium <input type="text" value="0"/> |
| Exercise Facility <input type="text" value="0"/> | Bocce Courts <input type="text" value="0"/> |
| Handball Court <input type="text" value="0"/> | Horseshoe Pit <input type="text" value="0"/> |

Improvements Needed

Winsor Basin

This large open space area has a dual use as stormwater retention and walking park. The serpentine pathway is over 4/5 of a mile. The outer loop is 2,913 linear feet (l.f.) with the crossings at 767 l.f. and 737 l.f. respectively.



Location

Area Maintained by:

Type

Acreage Event Space (sf)

Shared Use

Restrooms Water Fountains Play grounds Water Feature

Ramadas Field Lights Lights Parking lot Walking Path (lf)

Pumping Plant Shade covers Storage Fencing Trees



Recreation Facilities

- Pool
- Skate Facility
- Baseball Fields
- Soccer Fields
- Softball Fields
- Crows Nest
- Basketball Court
- Tennis Courts
- Volleyball Court
- Gymnasium
- Exercise Facility
- Bocce Courts
- Handball Court
- Horseshoe Pit

Improvements Needed

Winsor Rotary Park

This facility was built in conjunction with the Pioneer Park subdivision. It is a joint use neighborhood park for the area residents and a stormwater retention basin. The site contains a playground, a 1/3 mile walking path, fishing pond, a basketball court and grass area. This facility contains Ramadas #20-north side of park and #21-south side of park.



Location

Area Maintained by:

Type

Acreege Event Space (sf) Shared Use

Restrooms Water Fountains Play grounds Water Feature

Ramadas Field Lights Lights Parking lot Walking Path (lf)

Pumping Plant Shade covers Storage Fencing Trees



Recreation Facilities

- | | |
|--|---|
| Pool <input type="text" value="0"/> | Skate Facility <input type="text" value="0"/> |
| Baseball Fields <input type="text" value="0"/> | Soccer Fields <input type="text" value="0"/> |
| Softball Fields <input type="text" value="0"/> | Crows Nest <input type="text" value="0"/> |
| Basketball Court <input type="text" value="1"/> | Tennis Courts <input type="text" value="0"/> |
| Volleyball Court <input type="text" value="0"/> | Gymnasium <input type="text" value="0"/> |
| Exercise Facility <input type="text" value="0"/> | Bocce Courts <input type="text" value="0"/> |
| Handball Court <input type="text" value="0"/> | Horseshoe Pit <input type="text" value="0"/> |

Improvements Needed

North end corner redesign storm drain area, resurface parking area. Replace two slides on playground.

Woodard Fields

This site is a shared use facility with Woodard Junior High School and contains 2 softball fields and a crows nest. The field area can also be configured to provide a number of youth soccer fields for team play.



Location

Area Maintained by:

Type

Acreege Event Space (sf)

Shared Use

Restrooms Water Fountains Play grounds Water Feature

Ramadas Field Lights Lights Parking lot Walking Path (If)

Pumping Plant Shade covers Storage Fencing Trees



Recreation Facilities

| | | | |
|-------------------|--------------------------------|----------------|--------------------------------|
| Pool | <input type="text" value="0"/> | Skate Facility | <input type="text" value="0"/> |
| Baseball Fields | <input type="text" value="0"/> | Soccer Fields | <input type="text" value="0"/> |
| Softball Fields | <input type="text" value="2"/> | Crows Nest | <input type="text" value="1"/> |
| Basketball Court | <input type="text" value="0"/> | Tennis Courts | <input type="text" value="0"/> |
| Volleyball Court | <input type="text" value="0"/> | Gymnasium | <input type="text" value="0"/> |
| Exercise Facility | <input type="text" value="0"/> | Bocce Courts | <input type="text" value="0"/> |
| Handball Court | <input type="text" value="0"/> | Horseshoe Pit | <input type="text" value="0"/> |

Improvements Needed

Change out all fence and screening, replace restrooms and crows nest, add new stabilizer.

Yuma Armed Forces Park

Located on the 200 block of Gila Street in Downtown Yuma, was the historic Southern Pacific Railroad Depot. The historic building, hosted the City of Yuma Art Center, until destroyed by fire in 1993. Currently a landscaped setting, this is the site of Yuma Armed Forces Park. Through a public/private partnership between the City of Yuma and Yuma County Chamber of Commerce, the facility hosts a military memorial.



Location

Area Maintained by:

Type

Acreege Event Space (sf) Shared Use

Restrooms Water Fountains Play grounds Water Feature

Ramadas Field Lights Lights Parking lot Walking Path (If)

Pumping Plant Shade covers Storage Fencing Trees



Recreation Facilities

- Pool
- Skate Facility
- Baseball Fields
- Soccer Fields
- Softball Fields
- Crows Nest
- Basketball Court
- Tennis Courts
- Volleyball Court
- Gymnasium
- Exercise Facility
- Bocce Courts
- Handball Court
- Horseshoe Pit

Improvements Needed

Yuma Crossing State Historic Park

The Yuma Crossing State Historic Park is the original land access point west into California and north for access into the interior desert and mountains along the Colorado River. Development of the site includes a visitor information center, museum, plaza, pedestrian paths and themed displays interpreting various elements of the area's history using existing and reconstructed historic buildings and sites as settings. Yuma Crossing State Historic Park is part of the Yuma Crossing National Heritage Area, which includes the Riverfront Regional Park Development and Wetlands Area, and connects with the trails system. The site connects to the 1/2 mile Madison Trails walking path.



Location

Area Maintained by:

Type

Acreege Event Space (sf) Shared Use

Restrooms Water Fountains Play grounds Water Feature

Ramadas Field Lights Lights Parking lot Walking Path (If)

Pumping Plant Shade covers Storage Fencing Trees



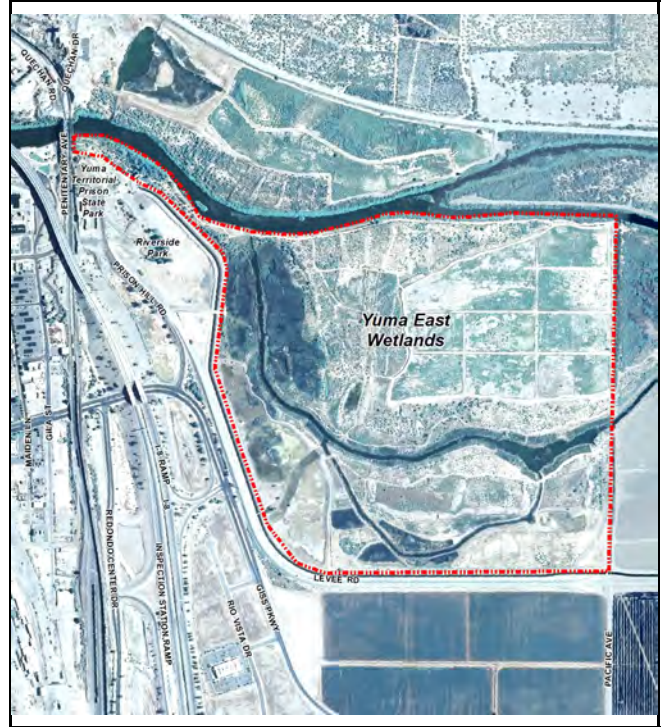
Recreation Facilities

- Pool
- Skate Facility
- Baseball Fields
- Soccer Fields
- Softball Fields
- Crows Nest
- Basketball Court
- Tennis Courts
- Volleyball Court
- Gymnasium
- Exercise Facility
- Bocce Courts
- Handball Court
- Horseshoe Pit

Improvements Needed

Yuma East Wetlands

The Yuma East Wetlands is a work in progress to restore the area to native wetlands through clearing, revegetation and back water channel excavation. The site currently has a 2.5 mile pedestrian trail and bike path running from the Ocean-to-Ocean Bridge to Pacific Avenue.



Location

Area Maintained by:

Type

Acreege Event Space (sf) Shared Use

Restrooms Water Fountains Play grounds Water Feature

Ramadas Field Lights Lights Parking lot Walking Path (If)

Pumping Plant Shade covers Storage Fencing Trees



Recreation Facilities

- | | |
|--|---|
| Pool <input type="text" value="0"/> | Skate Facility <input type="text" value="0"/> |
| Baseball Fields <input type="text" value="0"/> | Soccer Fields <input type="text" value="0"/> |
| Softball Fields <input type="text" value="0"/> | Crows Nest <input type="text" value="0"/> |
| Basketball Court <input type="text" value="0"/> | Tennis Courts <input type="text" value="0"/> |
| Volleyball Court <input type="text" value="0"/> | Gymnasium <input type="text" value="0"/> |
| Exercise Facility <input type="text" value="0"/> | Bocce Courts <input type="text" value="0"/> |
| Handball Court <input type="text" value="0"/> | Horseshoe Pit <input type="text" value="0"/> |

Improvements Needed

Yuma Pioneer Cemetary

The Yuma Pioneer Cemetary was established on June 24, 1895. Many of Yuma's pioneers, including members of the Redondo family, are buried in the graveyard. The 40 acres where the cemetery is located was deeded to the Village of Yuma on June 24, 1895. In 1889, the Village of Yuma deeded the first sections of land at the new cemetery to the Ancient Order of United Workmen and the Catholic Church. After Yuma became a town in 1902, many other sections were deeded to various fraternal organizations. Today, the City of Yuma owns and operates 17½ acres within the cemetery. The rest is either owned by Yuma County, fraternal organizations or private owners.



Location

Area Maintained by:

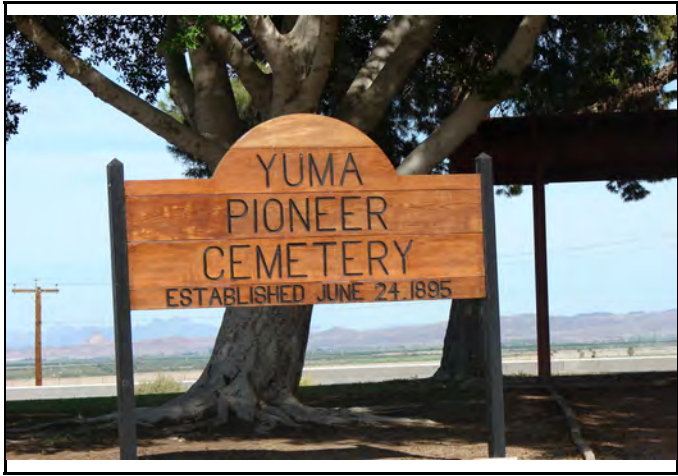
Type

Acreage Event Space (sf) Shared Use

Restrooms Water Fountains Play grounds Water Feature

Ramadas Field Lights Lights Parking lot Walking Path (If)

Pumping Plant Shade covers Storage Fencing Trees



Recreation Facilities

- Pool
- Skate Facility
- Baseball Fields
- Soccer Fields
- Softball Fields
- Crows Nest
- Basketball Court
- Tennis Courts
- Volleyball Court
- Gymnasium
- Exercise Facility
- Bocce Courts
- Handball Court
- Horseshoe Pit

Improvements Needed

Yuma Readiness Center

The Yuma Readiness and Community Center, located near Arizona Western College, is a joint-use facility with the Army National Guard. The facility consists of an administrative office, 2 large classrooms, an industrial kitchen, a small exercise room, and a large multipurpose room (which serves the guard as a drill hall, and serves the community with a gym/meeting room for recreational uses). The gymnasium is a multi-use facility with a volleyball court which alternatively supports four pickle-ball courts for team play.



Location

Area Maintained by:

Type

Acreage Event Space (sf) Shared Use

Restrooms Water Fountains Play grounds Water Feature

Ramadas Field Lights Lights Parking lot Walking Path (If)

Pumping Plant Shade covers Storage Fencing Trees



Recreation Facilities

| | | | |
|-------------------|--------------------------------|----------------|--------------------------------|
| Pool | <input type="text" value="0"/> | Skate Facility | <input type="text" value="0"/> |
| Baseball Fields | <input type="text" value="0"/> | Soccer Fields | <input type="text" value="0"/> |
| Softball Fields | <input type="text" value="0"/> | Crows Nest | <input type="text" value="0"/> |
| Basketball Court | <input type="text" value="0"/> | Tennis Courts | <input type="text" value="0"/> |
| Volleyball Court | <input type="text" value="1"/> | Gymnasium | <input type="text" value="1"/> |
| Exercise Facility | <input type="text" value="1"/> | Bocce Courts | <input type="text" value="0"/> |
| Handball Court | <input type="text" value="0"/> | Horseshoe Pit | <input type="text" value="0"/> |

Improvements Needed

Yuma Territorial Prison State Park

The Yuma Territorial Prison is a historic site and has a museum, picnic tables, and views from the original guard tower overlooking the confluence of the Colorado and Gila Rivers. The Yuma Territorial Prison is part of the Riverfront Regional Park Development and Wetlands Area and connects with the trails system.



Location

Area Maintained by:

Type

Acreege Event Space (sf) Shared Use

Restrooms Water Fountains Play grounds Water Feature

Ramadas Field Lights Lights Parking lot Walking Path (If)

Pumping Plant Shade covers Storage Fencing Trees



Recreation Facilities

- Pool
- Skate Facility
- Baseball Fields
- Soccer Fields
- Softball Fields
- Crows Nest
- Basketball Court
- Tennis Courts
- Volleyball Court
- Gymnasium
- Exercise Facility
- Bocce Courts
- Handball Court
- Horseshoe Pit

Improvements Needed

Yuma Valley Aquatic Center

The Yuma Valley Aquatic Center is a water park with a leisure pool, that has dumping buckets (elevated containers showering swimmers), slides, an aqua playground built into the pool and splash pad as well as a 13-lane competition pool with a three-meter diving board and two one-meter boards, along with a shaded spectator area and bleachers. The facility also has an indoor meeting and a number of shade structures and grassy areas. The project is the culmination of a collaborative effort between Parks and Recreation Department and the Yuma Union High School District.



Location

Area Maintained by:

Type

Acreege Event Space (sf)

Shared Use

Restrooms Water Fountains Play grounds Water Feature

Ramadas Field Lights Lights Parking lot Walking Path (If)

Pumping Plant Shade covers Storage Fencing Trees



Recreation Facilities

- | | |
|--|---|
| Pool <input type="text" value="1"/> | Skate Facility <input type="text" value="0"/> |
| Baseball Fields <input type="text" value="0"/> | Soccer Fields <input type="text" value="0"/> |
| Softball Fields <input type="text" value="0"/> | Crows Nest <input type="text" value="0"/> |
| Basketball Court <input type="text" value="0"/> | Tennis Courts <input type="text" value="0"/> |
| Volleyball Court <input type="text" value="0"/> | Gymnasium <input type="text" value="0"/> |
| Exercise Facility <input type="text" value="0"/> | Bocce Courts <input type="text" value="0"/> |
| Handball Court <input type="text" value="0"/> | Horseshoe Pit <input type="text" value="0"/> |

Improvements Needed

Yuma Valley Park

This 15-acre park features 4 adult regulation soccer fields with two lit for night games. The site also provides stormwater retention with a stormwater pumping facility located on the southwest corner.



Location

Area Maintained by:

Type

Acreeage Event Space (sf) Shared Use

Restrooms Water Fountains Play grounds Water Feature

Ramadas Field Lights Lights Parking lot Walking Path (If)

Pumping Plant Shade covers Storage Fencing Trees



Recreation Facilities

| | |
|--|---|
| Pool <input type="text" value="0"/> | Skate Facility <input type="text" value="0"/> |
| Baseball Fields <input type="text" value="0"/> | Soccer Fields <input type="text" value="4"/> |
| Softball Fields <input type="text" value="0"/> | Crows Nest <input type="text" value="0"/> |
| Basketball Court <input type="text" value="0"/> | Tennis Courts <input type="text" value="0"/> |
| Volleyball Court <input type="text" value="0"/> | Gymnasium <input type="text" value="0"/> |
| Exercise Facility <input type="text" value="0"/> | Bocce Courts <input type="text" value="0"/> |
| Handball Court <input type="text" value="0"/> | Horseshoe Pit <input type="text" value="0"/> |

Improvements Needed

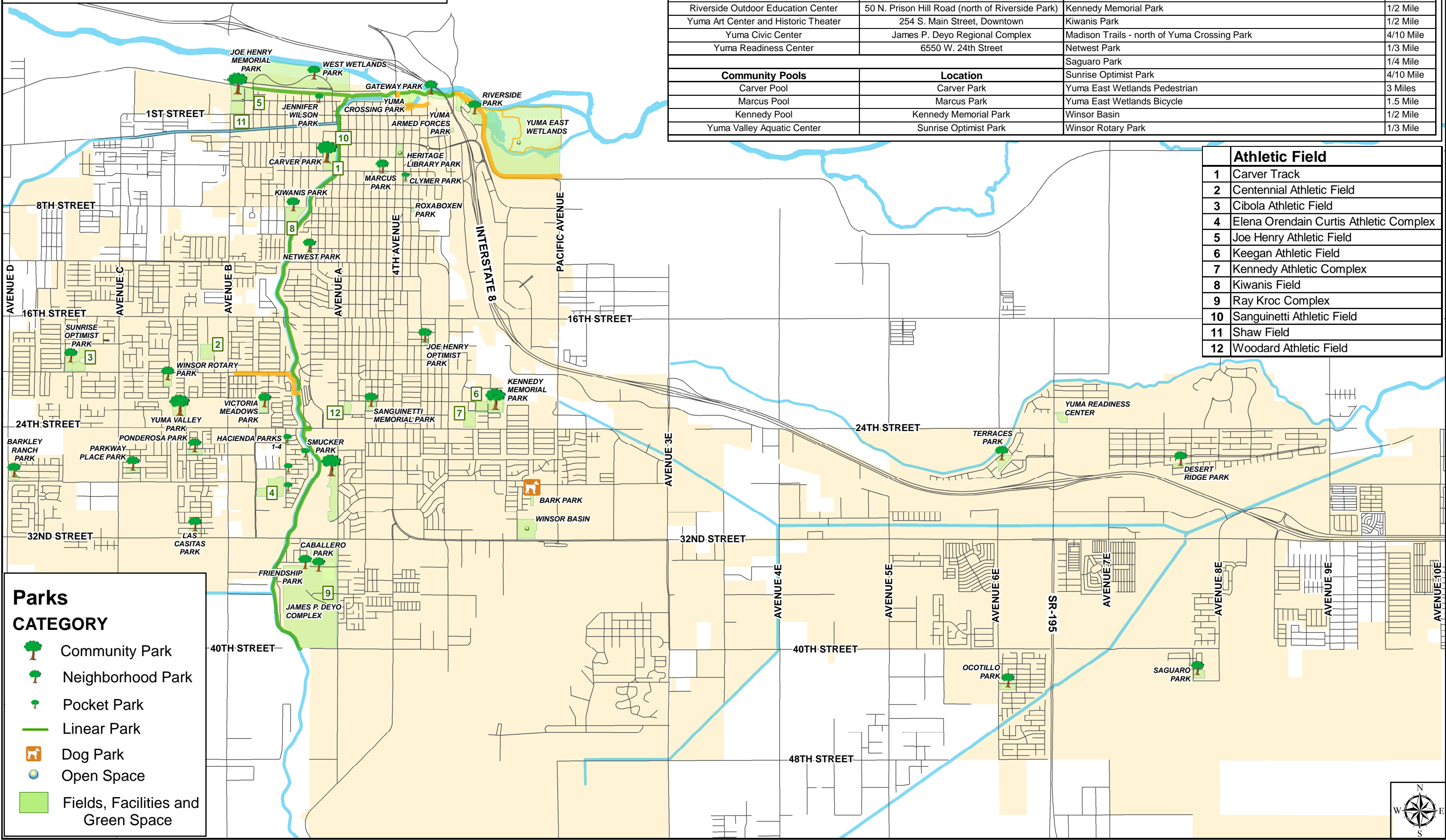
Install 2 Ramadas/ Finish Soccer Field Phase II, Playground Shade Cover

City of Yuma Parks and Recreation Facilities

| Recreation Centers | Location | Walking Paths/Trails | Distance |
|--|--|---|-----------|
| Clymer Recreation Center | Clymer Park | 20th Street Path - Ave B to E. Main Canal | 8/10 Mile |
| Joe Henry Optimist Center | Joe Henry Optimist Park | Carver Track - Carver Park | 1/4 Mile |
| John Morris Cottage | Carver Park | Colorado River Levee Linear Park - West Wetlands Park to Gateway Park | 1.5 Miles |
| Martin Luther King Jr. Neighborhood Center | 300 S. 13th Avenue (east of Carver Park) | East Main Canal Linear Park - Colorado Street to 40th Street | 5 Miles |
| North End Community Center | 160 E. 1st Street (west of Gateway Park) | Colorado Levee Equestrian Trail - West Wetlands Park to Gateway Park | 1.5 Miles |
| Riverside Outdoor Education Center | 50 N. Prison Hill Road (north of Riverside Park) | Kennedy Memorial Park | 1/2 Mile |
| Yuma Art Center and Historic Theater | 254 S. Main Street, Downtown | Kiwanis Park | 1/2 Mile |
| Yuma Civic Center | James P. Deyo Regional Complex | Madison Trails - north of Yuma Crossing Park | 4/10 Mile |
| Yuma Readiness Center | 6550 W. 24th Street | Netwest Park | 1/3 Mile |
| | | Saguaro Park | 1/4 Mile |
| | | Sunrise Optimist Park | 4/10 Mile |
| | | Yuma East Wetlands Pedestrian | 3 Miles |
| | | Yuma East Wetlands Bicycle | 1.5 Mile |
| | | Winsor Basin | 1/2 Mile |
| | | Winsor Rotary Park | 1/3 Mile |

| Community Pools | Location | Athletic Field |
|----------------------------|-----------------------|--|
| Carver Pool | Carver Park | 1 Carver Track |
| Marcus Pool | Marcus Park | 2 Centennial Athletic Field |
| Kennedy Pool | Kennedy Memorial Park | 3 Cibola Athletic Field |
| Yuma Valley Aquatic Center | Sunrise Optimist Park | 4 Elena Orendain Curtis Athletic Complex |

| Athletic Field | |
|----------------|--|
| 1 | Carver Track |
| 2 | Centennial Athletic Field |
| 3 | Cibola Athletic Field |
| 4 | Elena Orendain Curtis Athletic Complex |
| 5 | Joe Henry Athletic Field |
| 6 | Keegan Athletic Field |
| 7 | Kennedy Athletic Complex |
| 8 | Kiwanis Field |
| 9 | Ray Kroc Complex |
| 10 | Sanguinetti Athletic Field |
| 11 | Shaw Field |
| 12 | Woodard Athletic Field |



Parks

CATEGORY

- Community Park
- Neighborhood Park
- Pocket Park
- Linear Park
- Dog Park
- Open Space
- Fields, Facilities and Green Space

